

2023-2024

THÈSE

pour le

DIPLÔME D'ÉTAT DE DOCTEUR EN MÉDECINE

Qualification en MÉDECINE NUCLÉAIRE

STUDY OF PREDICTIVE FACTORS FOR RESPONSE TO ¹⁷⁷LU-PSMA IN PATIENTS WITH METASTATIC CASTRATION-RESISTANT PROSTATE CANCER

*ÉTUDE DES FACTEURS PRÉDICTIFS DE RÉPONSE AU ¹⁷⁷LU-PSMA
CHEZ LES PATIENTS ATTEINTS DE CANCER DE PROSTATE
MÉTASTATIQUE RÉSISTANT À LA CASTRATION*

PESLIER Hugo

Né le 16/08/1996 au Mans (72)

Sous la direction de M. le Dr. DUFOUR Pierre-Alban

Membres du jury

M. le Pr. LACOEUILLE Franck	Président
M. le Dr. DUFOUR Pierre-Alban	Directeur
M. le Pr BAILLY Matthieu	Membre
M. le Dr. BOUGHALEM Elouen	Membre

Soutenue publiquement le :
25 septembre 2024



**FACULTÉ
DE SANTÉ**
UNIVERSITÉ D'ANGERS

ENGAGEMENT DE NON-PLAGIAT

Je, soussigné monsieur PESLIER Hugo
déclare être pleinement conscient que le plagiat de documents ou d'une
partie d'un document publiée sur toutes formes de support, y compris l'internet,
constitue une violation des droits d'auteur ainsi qu'une fraude caractérisée.
En conséquence, je m'engage à citer toutes les sources que j'ai utilisées
pour écrire ce rapport ou mémoire.

signé par l'étudiant le **16/08/2024**

SERMENT D'HIPPOCRATE

« Au moment d'être admis à exercer la médecine, je promets et je jure d'être fidèle aux lois de l'honneur et de la probité. Mon premier souci sera de rétablir, de préserver ou de promouvoir la santé dans tous ses éléments, physiques et mentaux, individuels et sociaux. Je respecterai toutes les personnes, leur autonomie et leur volonté, sans aucune discrimination selon leur état ou leurs convictions. J'interviendrai pour les protéger si elles sont affaiblies, vulnérables ou menacées dans leur intégrité ou leur dignité. Même sous la contrainte, je ne ferai pas usage de mes connaissances contre les lois de l'humanité. J'informerai les patients des décisions envisagées, de leurs raisons et de leurs conséquences. Je ne tromperai jamais leur confiance et n'exploiterai pas le pouvoir hérité des circonstances pour forcer les consciences. Je donnerai mes soins à l'indigent et à quiconque me les demandera. Je ne me laisserai pas influencer par la soif du gain ou la recherche de la gloire.

Admis dans l'intimité des personnes, je tairai les secrets qui me seront confiés. Reçu à l'intérieur des maisons, je respecterai les secrets des foyers et ma conduite ne servira pas à corrompre les mœurs. Je ferai tout pour soulager les souffrances. Je ne prolongerai pas abusivement les agonies. Je ne provoquerai jamais la mort délibérément.

Je préserverai l'indépendance nécessaire à l'accomplissement de ma mission. Je n'entreprendrai rien qui dépasse mes compétences. Je les entretiendrai et les perfectionnerai pour assurer au mieux les services qui me seront demandés.

J'apporterai mon aide à mes confrères ainsi qu'à leurs familles dans l'adversité. Que les hommes et mes confrères m'accordent leur estime si je suis fidèle à mes promesses ; que je sois déshonoré et méprisé si j'y manque ».

LISTE DES ENSEIGNANTS DE LA FACULTÉ DE SANTÉ D'ANGERS

Doyen de la Faculté : Pr Nicolas Lerolle

Vice-Doyen de la Faculté et directeur du département de pharmacie :
Pr Sébastien Faure

Directeur du département de médecine : Pr Cédric Annweiler

PROFESSEURS DES UNIVERSITÉS

ABRAHAM Pierre	PHYSIOLOGIE	Médecine
ANGOULVANT Cécile	MEDECINE GENERALE	Médecine
ANNWEILER Cédric	GERIATRIE ET BIOLOGIE DU VIEILLISSEMENT	Médecine
ASFAR Pierre	REANIMATION	Médecine
AUBE Christophe	RADIOLOGIE ET IMAGERIE MEDICALE	Médecine
AUGUSTO Jean-François	NEPHROLOGIE	Médecine
BAUFRETON Christophe	CHIRURGIE THORACIQUE ET CARDIOVASCULAIRE	Médecine
BELLANGER William	MEDECINE GENERALE	Médecine
BELONCLE François	REANIMATION	Médecine
BENOIT Jean-Pierre	PHARMACOTECHNIE	Pharmacie
BIERE Loïc	CARDIOLOGIE	Médecine
BIGOT Pierre	UROLOGIE	Médecine
BONNEAU Dominique	GENETIQUE	Médecine
BOUCHARA Jean-Philippe	PARASITOLOGIE ET MYCOLOGIE	Médecine
BOUET Pierre-Emmanuel	GYNECOLOGIE-OBSTETRIQUE	Médecine
BOURSIER Jérôme	GASTROENTEROLOGIE ; HEPATOLOGIE	Médecine
BOUVARD Béatrice	RHUMATOLOGIE	
BRIET Marie	PHARMACOLOGIE	Médecine
CALES Paul	GASTROENTEROLOGIE ; HEPATOLOGIE	Médecine
CAMPONE Mario	CANCEROLOGIE ; RADIOTHERAPIE	Médecine
CAROLI-BOSC François-Xavier	GASTROENTEROLOGIE ; HEPATOLOGIE	Médecine
CASSEREAU Julien	NEUROLOGIE	Médecine
CLERE Nicolas	PHARMACOLOGIE / PHYSIOLOGIE	Pharmacie
CONNAN Laurent	MEDECINE GENERALE	Médecine
COPIN Marie-Christine	ANATOMIE ET CYTOLOGIE PATHOLOGIQUES	Médecine
COUTANT Régis	PEDIATRIE	Médecine
CUSTAUD Marc-Antoine	PHYSIOLOGIE	Médecine
CRAUSTE-MANCIET Sylvie	PHARMACOTECHNIE HOSPITALIERE	Pharmacie
DE CASABIANCA Catherine	MEDECINE GENERALE	Médecine
DESCAMPS Philippe	GYNECOLOGIE-OBSTETRIQUE	Médecine
D'ESCATHA Alexis	MEDECINE ET SANTE AU TRAVAIL	Médecine
DINOMAS Mickaël	MEDECINE PHYSIQUE ET DE READAPTATION	Médecine

DIQUET Bertrand	PHARMACOLOGIE FONDAMENTALE ; PHARMACOLOGIE CLINIQUE ; ADDICTOLOGIE	Médecine
DUBEE Vincent	MALADIES INFECTIEUSES ET TROPICALES	Médecine
DUCANCELLE Alexandra	BACTERIOLOGIE-VIROLOGIE ; HYGIENE HOSPITALIERE	Médecine
DUVAL Olivier	CHIMIE THERAPEUTIQUE	Pharmacie
DUVERGER Philippe	PEDOPSYCHIATRIE	Médecine
EVEILLARD Mathieu	BACTERIOLOGIE-VIROLOGIE	Pharmacie
FAURE Sébastien	PHARMACOLOGIE PHYSIOLOGIE	Pharmacie
FOURNIER Henri- Dominique	ANATOMIE	Médecine
FOUQUET Olivier	CHIRURGIE THORACIQUE ET CARDIOVASCULAIRE	Médecine
FURBER Alain	CARDIOLOGIE	Médecine
GAGNADOUX Frédéric	PNEUMOLOGIE	Médecine
GOHIER Bénédicte	PSYCHIATRIE D'ADULTES	Médecine
GUARDIOLA Philippe	HEMATOLOGIE ; TRANSFUSION	Médecine
GUILET David	CHIMIE ANALYTIQUE	Pharmacie
HAMY Antoine	CHIRURGIE GENERALE	Médecine
HENNI Samir	MEDECINE VASCULAIRE	Médecine
HUNAUT-BERGER Mathilde	HEMATOLOGIE ; TRANSFUSION	Médecine
IFRAH Norbert	HEMATOLOGIE ; TRANSFUSION	Médecine
JEANNIN Pascale	IMMUNOLOGIE	Médecine
KEMPF Marie	BACTERIOLOGIE-VIROLOGIE ; HYGIENE HOSPITALIERE	Médecine
KUN-DARBOIS Daniel	CHIRURGIE MAXILLO-FACIALE ET STOMATOLOGIE	Médecine
LACOEUILLE FRANCK	RADIOPHARMACIE	Pharmacie
LACCOURREYE Laurent	OTO-RHINO-LARYNGOLOGIE	Médecine
LAGARCE Frédéric	BIOPHARMACIE	Pharmacie
LANDREAU Anne	BOTANIQUE/ MYCOLOGIE	Pharmacie
LARCHER Gérald	BIOCHIMIE ET BIOLOGIE MOLECULAIRES	Pharmacie
LASOCKI Sigismond	ANESTHESIOLOGIE-REANIMATION	Médecine
LEBDAI Souhil	UROLOGIE	Médecine
LEGENDRE Guillaume	GYNECOLOGIE-OBSTETRIQUE	Médecine
LEGRAND Erick	RHUMATOLOGIE	Médecine
LERMITE Emilie	CHIRURGIE GENERALE	Médecine
LEROLLE Nicolas	REANIMATION	Médecine
LUNEL-FABIANI Françoise	BACTERIOLOGIE-VIROLOGIE ; HYGIENE HOSPITALIERE	Médecine
LUQUE PAZ Damien	HEMATOLOGIE BIOLOGIQUE	Médecine
MARCHAIS Véronique	BACTERIOLOGIE-VIROLOGIE	Pharmacie
MARTIN Ludovic	DERMATO-VENEREOLOGIE	Médecine
MAY-PANLOUP Pascale	BIOLOGIE ET MEDECINE DU DEVELOPPEMENT ET DE LA REPRODUCTION	Médecine

MENEI Philippe	NEUROCHIRURGIE	Médecine
MERCAT Alain	REANIMATION	Médecine
PAPON Nicolas	PARASITOLOGIE ET MYCOLOGIE MEDICALE	Pharmacie
PASSIRANI Catherine	CHIMIE GENERALE	Pharmacie
PELLIER Isabelle	PEDIATRIE	Médecine
PETIT Audrey	MEDECINE ET SANTE AU TRAVAIL	Médecine
PICQUET Jean	CHIRURGIE VASCULAIRE ; MEDECINE VASCULAIRE	Médecine
PODEVIN Guillaume	CHIRURGIE INFANTILE	Médecine
PROCACCIO Vincent	GENETIQUE	Médecine
PRUNIER Delphine	BIOCHIMIE ET BIOLOGIE MOLECULAIRE	Médecine
PRUNIER Fabrice	CARDIOLOGIE	Médecine
RAMOND-ROQUIN Aline	MEDECINE GENERALE	Médecine
REYNIER Pascal	BIOCHIMIE ET BIOLOGIE MOLECULAIRE	Médecine
RICHOMME Pascal	PHARMACOGNOSIE	Pharmacie
RINEAU Emmanuel	ANESTHESIOLOGIE REANIMATION	Médecine
RIOU Jérémie	BIOSTATISTIQUES	Pharmacie
RODIEN Patrice	ENDOCRINOLOGIE, DIABETE ET MALADIES METABOLIQUES	Médecine
ROQUELAURE Yves	MEDECINE ET SANTE AU TRAVAIL	Médecine
ROUGE-MAILLART Clotilde	MEDECINE LEGALE ET DROIT DE LA SANTE	Médecine
ROUSSEAU Audrey	ANATOMIE ET CYTOLOGIE PATHOLOGIQUES	Médecine
ROUSSEAU Pascal	CHIRURGIE PLASTIQUE, RECONSTRUCTRICE ET ESTHETIQUE	Médecine
ROUSSELET Marie-Christine	ANATOMIE ET CYTOLOGIE PATHOLOGIQUES	Médecine
ROY Pierre-Marie	MEDECINE D'URGENCE	Médecine
SAULNIER Patrick	BIOPHYSIQUE ET BIOSTATISTIQUES	Pharmacie
SERAPHIN Denis	CHIMIE ORGANIQUE	Pharmacie
SCHMIDT Aline	HEMATOLOGIE ; TRANSFUSION	Médecine
TESSIER-CAZENEUVE Christine	MEDECINE GENERALE	Médecine
TRZEPIZUR Wojciech	PNEUMOLOGIE	Médecine
UGO Valérie	HEMATOLOGIE ; TRANSFUSION	Médecine
URBAN Thierry	PNEUMOLOGIE	Médecine
VAN BOGAERT Patrick	PEDIATRIE	Médecine
VENARA Aurélien	CHIRURGIE VISCERALE ET DIGESTIVE	Médecine
VENIER-JULIENNE Marie-Claire	PHARMACOTECHNIE	Pharmacie
VERNY Christophe	NEUROLOGIE	Médecine
WILLOTEAUX Serge	RADIOLOGIE ET IMAGERIE MEDICALE	Médecine

MAÎTRES DE CONFÉRENCES

AMMI Myriam	CHIRURGIE THORACIQUE ET CARDIOVASCULAIRE	Médecine
BAGLIN Isabelle	CHIMIE THERAPEUTIQUE	Pharmacie

BASTIAT Guillaume	BIOPHYSIQUE ET BIOSTATISTIQUES	Pharmacie
BEAUVILLAIN Céline	IMMUNOLOGIE	Médecine
BEGUE Cyril	MEDECINE GENERALE	Médecine
BELIZNA Cristina	MEDECINE INTERNE	Médecine
BENOIT Jacqueline	PHARMACOLOGIE	Pharmacie
BESSAGUET Flavien	PHYSIOLOGIE PHARMACOLOGIE	Pharmacie
BERNARD Florian	ANATOMIE ; discipline hospit : NEUROCHIRURGIE	Médecine
BLANCHET Odile	HEMATOLOGIE ; TRANSFUSION	Médecine
BOISARD Séverine	CHIMIE ANALYTIQUE	Pharmacie
BRIET Claire	ENDOCRINOLOGIE, DIABETE ET MALADIES METABOLIQUES	Médecine
BRIS Céline	BIOCHIMIE ET BIOLOGIE MOLECULAIRE	Pharmacie
CANIVET Clémence	GASTROENTEROLOGIE-HEPATOLOGIE	Médecine
CAPITAIN Olivier	CANCEROLOGIE ; RADIOTHERAPIE	Médecine
CHAO DE LA BARCA Juan-Manuel	BIOCHIMIE ET BIOLOGIE MOLECULAIRE	Médecine
CHEVALIER Sylvie	BIOLOGIE CELLULAIRE	Médecine
CHOPIN Matthieu	MEDECINE GENERALE	Médecine
CODRON Philippe	NEUROLOGIE	Médecine
COLIN Estelle	GENETIQUE	Médecine
DEMAS Josselin	SCIENCES DE LA READAPTATION	Médecine
DERBRE Séverine	PHARMACOGNOSIE	Pharmacie
DESHAYES Caroline	BACTERIOLOGIE VIROLOGIE	Pharmacie
DOUILLET Delphine	MEDECINE D'URGENCE	Médecine
FERRE Marc	BIOLOGIE MOLECULAIRE	Médecine
FORTRAT Jacques-Olivier	PHYSIOLOGIE	Médecine
GHALI Maria	MEDECINE GENERALE	Médecine
GUELFF Jessica	MEDECINE GENERALE	Médecine
HAMEL Jean-François	BIOSTATISTIQUES, INFORMATIQUE MEDICALE	Médicale
HELESBEUX Jean-Jacques	CHIMIE ORGANIQUE	Pharmacie
HERIVAUX Anaïs	BIOTECHNOLOGIE	Pharmacie
HINDRE François	BIOPHYSIQUE	Médecine
JOUSSET-THULLIER Nathalie	MEDECINE LEGALE ET DROIT DE LA SANTE	Médecine
JUDALET-ILLAND Ghislaine	MEDECINE GENERALE	Médecine
KHIATI Salim	BIOCHIMIE ET BIOLOGIE MOLECULAIRE	Médecine
LEGEAY Samuel	PHARMACOCINETIQUE	Pharmacie
LEMEE Jean-Michel	NEUROCHIRURGIE	Médecine
LE RAY-RICHOMME Anne-Marie	PHARMACOGNOSIE	Pharmacie
LEPELTIER Elise	CHIMIE GENERALE	Pharmacie
LETOURNEL Franck	BIOLOGIE CELLULAIRE	Médecine
LIBOUBAN Hélène	HISTOLOGIE	Médecine
MABILLEAU Guillaume	HISTOLOGIE, EMBRYOLOGIE ET CYTOGENETIQUE	Médecine
MALLET Sabine	CHIMIE ANALYTIQUE	Pharmacie
MAROT Agnès	PARASITOLOGIE ET MYCOLOGIE MEDICALE	Pharmacie
MESLIER Nicole	PHYSIOLOGIE	Médecine

MIOT Charline	IMMUNOLOGIE	Médecine
MOUILLIE Jean-Marc	PHILOSOPHIE	Médecine
NAIL BILLAUD Sandrine	IMMUNOLOGIE	Pharmacie
PAILHORIE Hélène	BACTERIOLOGIE-VIROLOGIE	Médecine
PAPON Xavier	ANATOMIE	Médecine
PASCO-PAPON Anne	RADIOLOGIE ET IMAGERIE MEDICALE	Médecine
PECH Brigitte	PHARMACOTECHNIE	Pharmacie
PENCHAUD Anne-Laurence	SOCIOLOGIE	Médecine
PIHET Marc	PARASITOLOGIE ET MYCOLOGIE	Médecine
POIROUX Laurent	SCIENCES INFIRMIERES	Médecine
PY Thibaut	MEDECINE GENERALE	Médecine
RIOU Jérémie	BIOSTATISTIQUES	Pharmacie
RIQUIN Elise	PEDOPSYCHIATRIE ; ADDICTOLOGIE	Médecine
RONY Louis	CHIRURGIE ORTHOPEDIQUE ET TRAUMATOLOGIQUE	Médecine
ROGER Emilie	PHARMACOTECHNIE	Pharmacie
SAVARY Camille	PHARMACOLOGIE-TOXICOLOGIE	Pharmacie
SCHMITT Françoise	CHIRURGIE INFANTILE	Médecine
SCHINKOWITZ Andréas	PHARMACOGNOSIE	Pharmacie
SPIESSER-ROBELET Laurence	PHARMACIE CLINIQUE ET EDUCATION THERAPEUTIQUE	Pharmacie
TEXIER-LEGENDRE Gaëlle	MEDECINE GENERALE	Médecine
VIAULT Guillaume	CHIMIE ORGANIQUE	Pharmacie

AUTRES ENSEIGNANTS

PRCE		
AUTRET Erwan	ANGLAIS	Santé
BARBEROUSSE Michel	INFORMATIQUE	Santé
COYNE Ashley-Rose	ANGLAIS	Santé
O'SULLIVAN Kayleigh	ANGLAIS	Santé
RIVEAU Hélène	ANGLAIS	
PAST/MAST		
BEAUVAIS Vincent	OFFICINE	Pharmacie
BRAUD Cathie	OFFICINE	Pharmacie
DILÉ Nathalie	OFFICINE	Pharmacie
GUILLET Anne-Françoise	PHARMACIE DEUST PREPARATEUR	Pharmacie
MOAL Frédéric	PHARMACIE CLINIQUE	Pharmacie
CHAMPAGNE Romain	MEDECINE PHYSIQUE ET READAPTATION	Médecine
GUITTON Christophe	MEDECINE INTENSIVE-REANIMATION	Médecine
KAASSIS Mehdi	GASTRO-ENTEROLOGIE	Médecine
LAVIGNE Christian	MEDECINE INTERNE	Médecine
PICCOLI Giorgia	NEPHROLOGIE	Médecine
POMMIER Pascal	CANCEROLOGIE-RADIOTHERAPIE	Médecine
SAVARY Dominique	MEDECINE D'URGENCE	Médecine
PLP		
CHIKH Yamina	ECONOMIE-GESTION	Médecine

REMERCIEMENTS

Merci aux membres du jury de me faire l'honneur d'évaluer mon travail de thèse.

Merci Pierre-Alban pour tes conseils avisés, merci également Valérie pour votre aide précieuse et votre expertise sur les analyses statistiques.

Merci aux médecins nucléaires du CHU d'Angers et du Centre de Cancérologie de la Sarthe.

Merci à toute l'équipe du service de médecine nucléaire du CHU d'Orléans pour votre accueil chaleureux, votre bienveillance et pour tout ce que vous m'avez apporté au cours de mon semestre orléanais, très formateur. Ce serait un grand plaisir de pouvoir travailler de nouveau avec vous.

Merci à l'équipe de la Médecine Nucléaire Tourangelle, à Caroline, Yacine et Henri pour votre accueil, pour m'avoir permis de faire ma première expérience de remplacements et pour votre disponibilité.

Merci Alice pour ta gentillesse, merci à mes co-internes de médecine nucléaire et de radiopharmacie.

Merci Papa et Maman pour l'éducation et les valeurs que vous m'avez transmises et pour votre soutien sans faille au cours de ce long cursus médical. Je ne serais jamais arrivé jusqu'ici sans votre aide. Merci à mon frère et à ma sœur, Gabriel et Éléna.

Merci à mes professeurs du Samouraï 2000, Philippe, Didier, Jonathan et Johan. Vous m'avez transmis la passion du karaté, appris le goût de l'effort, le contrôle de soi, la rigueur et surtout à rien lâcher jusqu'à atteindre mes objectifs.

Merci Agathe, mon amour, d'être toujours à mes côtés. Merci pour ton soutien indéfectible, ta gentillesse, ta douceur et tes tendres attentions. J'ai vécu de merveilleux moments avec toi et j'aimerais que cela continue.

Liste des abréviations

¹¹¹ In	Indium-111
¹⁷⁷ Lu	Lutetium-177
⁶⁸ Ga	Gallium-68
ADT	Anti-hormonal Deprivation Therapy
ALAT	Alanine Aminotransferase
ALP	Alkaline Phosphatase
ANC	Absolute Neutrophil Count
ASAT	Aspartate Aminotransferase
BMI	Body Mass Index
BRCA	Breast Cancer gene
CI	Confidence Interval
CT	Computed Tomography
EANM	European Association of Nuclear Medicine
ECOG	Eastern Cooperative Oncology Group
FDG	Fluorodeoxyglucose
GBq	Giga-Becquerel
GE	General Electric
GFR	Glomerular Filtration Rate
gGT	Gamma Glutamyl Transferase
Hb	Hemoglobin
ICO	Institut de Cancérologie de l'Ouest
INCA	Institut National du Cancer
ISUP	International Society of Urological Pathology
keV	Kilo-electron volt
LDH	Lactate Dehydrogenase
mCRPC	Metastatic Castration Resistant Prostate Cancer
NHA	Novel Hormonal Agents
PET	Positron Emission Tomography
PFS	Progression-Free Survival
PLT	Platelets
PSA	Prostate Specific Antigen
PSG score	Prostate-to-Salivary Gland score
PSMA	Prostate-Specific Membrane Antigen
SNMMI	Society of Nuclear Medicine and Molecular Imaging
SoC	Standard of Care
SPECT	Single Photon Emission Computed Tomography
SUL _{max}	Maximum Standardized Uptake value – Lean body mass
TAP	Thorax, Abdomen and Pelvis
TTV	Total Tumor Volume
WBC	White Blood Count

Plan

SERMENT D'HIPPOCRATE

INTRODUCTION

METHODS

Study design and population

⁶⁸Ga-PSMA PET/CT and pre-treatment preparation

¹⁷⁷Lu-PSMA therapy protocol

Outcomes

Statistical analysis

Univariate analyses

Multivariate analyses

Repeated PSA measurements

RESULTS

Factors associated with early treatment discontinuation

Factors associated with poor PSA response

Overall survival from the first cycle of ¹⁷⁷Lu-PSMA:

DISCUSSION

Impact of clinico-biological factors on response to ¹⁷⁷Lu-PSMA

Impact of metabolic factors on ⁶⁸Ga-PSMA PET/CT

Main limitations of the study

Future perspectives

CONCLUSION:

BIBLIOGRAPHY

LISTE DES FIGURES

LISTE DES TABLEAUX

TABLE DES MATIERES

APPENDIX

STUDY OF PREDICTIVE FACTORS FOR RESPONSE TO ¹⁷⁷LU-PSMA IN PATIENTS WITH METASTATIC CASTRATION-RESISTANT PROSTATE CANCER

Hugo Peslier¹, Valérie Seegers², Pierre-Alban Dufour³.

¹Department of Nuclear Medicine, University Hospital of Angers, 4 rue Larrey, 49100 Angers, France.

²Research and Statistics Department, ICO Pays de la Loire, 15 rue André Boquel, 49055 Angers, France.

³Department of Nuclear Medicine, ICO Pays de la Loire, 15 rue André Boquel, 49055 Angers, France.

ABSTRACT

Introduction

Metastatic castration-resistant prostate cancer (mCRPC) is an aggressive disease with a poor prognosis and few therapeutic options. In recent years, ^{177}Lu -PSMA, a novel radioligand therapy, has shown promising results in patients who have failed conventional therapies. However, around 30% of patients do not respond adequately to this treatment. In this retrospective cohort study, we examined clinical, biological, and ^{68}Ga -PSMA PET/CT-derived factors associated with poor treatment response.

Materials and Methods

We conducted a retrospective cohort study including 63 patients treated at ICO Angers for progressive mCRPC following Novel Hormonal Agents and taxane-based chemotherapy. The primary endpoint was early treatment discontinuation, defined as stopping therapy at or before the 4th cycle. Secondary endpoints included PSA response and overall survival.

Results

A total of 63 patients were included in this study. Factors associated with early treatment discontinuation included a BMI < 25 kg/m², PSA doubling time < 2 months, hemoglobin levels < 10 g/dL, albumin levels < 35 g/L, and elevated levels of lactate dehydrogenase (LDH) and alkaline phosphatase (ALP). On ^{68}Ga -PSMA PET/CT imaging, low SUL_{max}, high Total Tumor Volume, and a low PSG score were also linked to early treatment discontinuation.

Conclusion

This study identified several clinical, biological, and ^{68}Ga -PSMA PET-derived factors associated with early treatment discontinuation. Patients with poor overall health, aggressive or extensive disease, or low PSMA expression are at higher risk of treatment failure.

INTRODUCTION

According to The Global Cancer Observatory, prostate cancer is the second most common cancer and the sixth leading cause of cancer-related deaths in men worldwide in 2020, with an incidence rate of 30.7 per 100,000 and a mortality rate of 7.7 per 100,000 (1).

In France, according to 2018 data from INCA (Institut National du Cancer), prostate cancer is the most common cancer and the third leading cause of cancer-related deaths in men. The median age at diagnosis is 69 years. It is a condition with a favorable prognosis, with a 5-year survival rate of 93%. Indeed, 80% of cases are diagnosed at a localized stage, and the stage of the disease at diagnosis is a major prognostic factor (2). Notably, the 5-year survival rate of de novo metastatic prostate cancer is around 30% (3).

In the natural evolution of untreated prostate cancer, initial localized disease slowly progresses to locoregional involvement, and subsequently to a metastatic stage with bone, lymph node or visceral metastases. Following definitive local therapy for localized forms through radical prostatectomy or external beam radiotherapy, recurrence is observed in 27-53% of patients (4).

At the metastatic castration-resistant stage defined by biochemical or radiological disease progression in an environment with very low serum testosterone concentration (< 50 ng/dL), prostate cancer is characterized by a poor prognosis and the available therapeutic options are currently limited to anti-hormonal deprivation therapy (ADT) in combination with novel hormonal agents (NHA) (e.g. enzalutamide, abiraterone) or taxane-based chemotherapies (e.g.

docetaxel and cabazitaxel). For patients with metastatic castration-resistant prostate cancer (mCRPC) with alteration in BRCA 1 or 2, Olaparib can be considered after NHA (5).

For several decades, extensive research has sought to identify cellular targets for the development of novel targeted therapies in prostate cancer. In 1987, *Horoszewicz et al.* first described Prostate-Specific Membrane Antigen (PSMA) (6). This is a type II transmembrane protein involved in tumor proliferation and neoangiogenesis through the metabolism of glutamate and folates. PSMA is overexpressed in most prostate cancers, approximately 1000 times more than in normal prostatic tissue, but is also physiologically expressed in various other tissues, particularly the salivary glands. Importantly, PSMA is not exclusive to prostate cancer; it is also present on endothelial cells of neovessels in other tumors, including colon adenocarcinoma, renal cell carcinoma, lung cancer, and melanoma. Studies have shown that PSMA expression correlates with tumor grade and the presence of metastatic disease, with higher levels associated with poorer prognosis.

In the field of nuclear medicine, several synthetic ligands of PSMA have been developed with the aim of creating radiopharmaceutical drugs both for imaging and therapy (7,8). This refers to the concept of theranostics, a term derived from the combination of 'therapy' and 'diagnostics.' Theranostics involves using the same specific ligand for a cellular target, initially paired with a gamma-emitting radioisotope to perform positron-emission tomography-computed tomographic (PET/CT) scan or Single Photon Emission Computed Tomography (SPECT) imaging of tumor lesions (e.g., ^{68}Ga , ^{18}F or ^{111}In). In a subsequent step,

the ligand is combined with an alpha or beta- emitting radioisotope capable of destroying the previously targeted tumor cells (e.g., ^{177}Lu) (9).

Among the radioisotopes suitable for therapy, ^{177}Lu is a beta-emitting radionuclide with a half-life of 6.65 days, a maximum β - particle energy of 497 keV and a maximum tissue penetration of 1.8 mm. This makes it particularly suitable for targeted treatment of prostate cancer tumors and their microenvironment, minimizing damage to surrounding healthy tissue. Gamma emission with 113 and 208 keV photons allows for whole-body scintigraphy after each treatment cycle to verify the proper uptake of the radiopharmaceutical drug to all tumor targets, ensure the absence of extravasation and to perform personalized dosimetry. Comparison of each post-therapy scintigraphy also allows tracking treatment efficacy and detecting any potential disease progression that would necessitate modification of the therapeutic approach (10,11).

The international open-labeled phase 3 trial VISION involving 831 patients, investigating the efficacy and safety of ^{177}Lu -PSMA-617 (commercialized under the name PLUVICTO®), has shown significant promise in extending imaging-based progression-free survival (median: 8.7 vs 3.4 months) and overall survival (median: 15.3 vs 11.3 months) when administered alongside standard-care therapy in patients with advanced and progressive PSMA-positive mCRPC, ^{177}Lu -PSMA-617 was associated with a low incidence of serious adverse events. In this study, patients were required, among other criteria, to have previously received one NHA, at least one but no more than two taxane regimens, a positive ^{68}Ga -PSMA-11 PET-CET scan, an Eastern Cooperative Oncology Group (ECOG)

Performance Status score of 0 through 2, a life expectancy > 6 months and an adequate organ function. The positivity criteria for ⁶⁸Ga-PSMA PET/CT in the VISION study are presented below in [Table I](#) (12). Based on PSMA PET/CT criteria, patients who were classified as screen failures in the VISION trial had worse short-term outcomes than those who were classified as eligible (13)

Table I: Interpretation criteria for ⁶⁸Ga-PSMA PET in the VISION study

Positive ⁶⁸ Ga-PSMA PET/CT	Négative ⁶⁸ Ga-PSMA PET/CT
At least one PSMA-positive lesion <i>And</i> No PSMA-negative lesion	No PSMA-positive lesion <i>Or</i> Presence of at least one PSMA-negative lesion meeting the following size criteria: <ul style="list-style-type: none"> • a short axis ≥ 2.5 cm for lymph nodes • a short axis ≥ 1 cm for visceral or bone metastatic lesions
PSMA-positive lesion	PSMA-negative lesion
Lesion with uptake higher than that of the liver	Lesion with uptake equal or less than that of the liver

In France, PLUVICTO® was first used in 2021 under a Temporary Authorization for Use. Since May 2023, it has been granted Marketing Authorization and is now routinely available for the treatment of adult patients with mCRPC who have progressive disease and are positive for PSMA, and who have been treated with androgen pathway inhibitor hormone therapy and taxane-based chemotherapy (14).

The initiation of treatment with PLUVICTO® is complex and requires the expertise of a nuclear medicine physician in collaboration with an oncologist. Joint recommendations have been issued by the European Association of Nuclear

Medicine (EANM) and the Society of Nuclear Medicine and Molecular Imaging (SNMMI) (15).

Before starting treatment, several eligibility criteria must be confirmed. In a theranostic approach, a PET scan with ^{68}Ga -PSMA is required to identify PSMA-positive tumor targets and ensure there are no PSMA-negative lesions meeting the specified size criteria. Additionally, a standard biological assessment including a complete blood count, liver function tests and renal function tests must be conducted to rule out contraindications such as cytopenias or severe renal or hepatic insufficiency. A thorough evaluation of the patient's general health and comorbidities should be performed on a case-by-case basis during a pre-treatment consultation. Relative contraindications established by nuclear medicine societies include: a life expectancy of less than 3 months, an ECOG Performance Status of ≥ 3 , uncontrollable urinary incontinence, acute urinary obstruction, severe comorbidities (e.g., psychiatric or cardiovascular conditions affecting hydration), severe renal or hepatic insufficiency (GFR < 30 ml/min, creatinine $>$ twice the upper limit of normal, liver enzymes $>$ five times the upper limit of normal), active infection, and significant cytopenias (WBC < 2.5 G/L, ANC < 1.5 G/L PLT < 75 G/L).

The standard treatment regimen consists of 6 cycles administered every 6 weeks, each involving an intravenous injection of 7.4 GBq of ^{177}Lu -PSMA-617. Due to the co-emission of a 208 keV gamma ray by ^{177}Lu , a whole-body scan is performed within 48 hours after each injection to confirm proper radiopharmaceutical binding to tumor targets, check for tumor progression that

might impact treatment continuation and ensure there is no extravasation at the injection site or contamination.

During and after PLUVICTO® administration, radioprotection measures must be implemented to prevent radioactive waste from contaminating the environment and to protect both healthcare staff and the patient's close contacts. Specifically, patients should be hospitalized for 6 to 24 hours to collect their urine in decay containers. Radioprotection guidelines for home care can be adjusted based on dose rate measurements taken at the end of hospitalization.

Ongoing clinical and biological monitoring is essential during treatment, including assessing general health, screening for hematological and non-hematological toxicities and tracking PSA levels with tests conducted every 3 weeks. In cases of severe toxicity, adjustments to the dose, delays or discontinuation of treatment may be considered on an individual basis. Efficacy should be evaluated with Computed Tomography (CT) scans and bone scintigraphy every 12 weeks and at the end of the 6 treatment cycles. The treatment regimen for ^{177}Lu -PSMA administered at ICO Angers is presented below in [Figure 1](#).

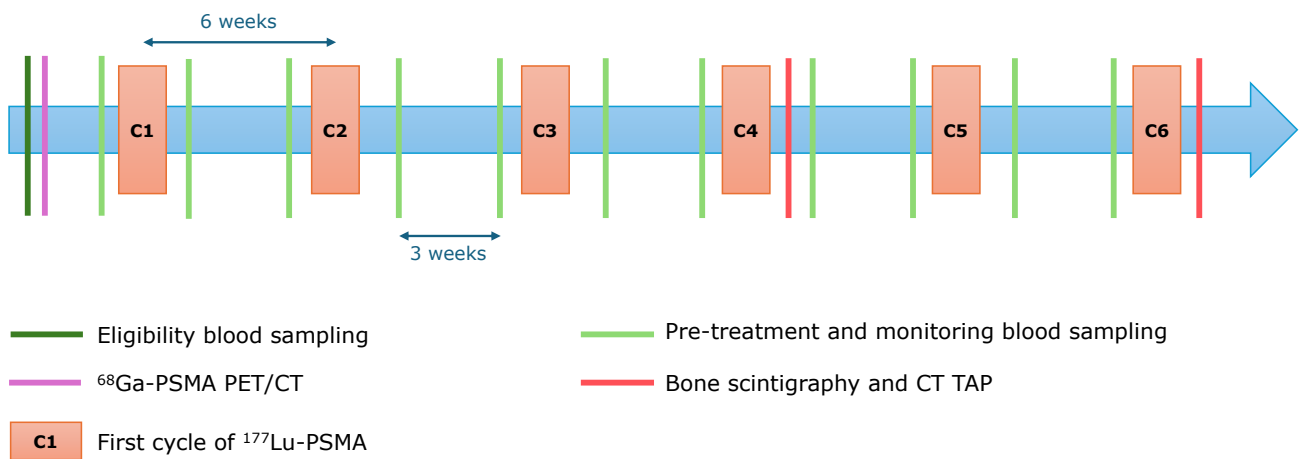


Figure 1: ^{177}Lu -PSMA treatment regimen and monitoring at ICO Angers

Despite initial patient selection based on VISION study criteria, several retrospective studies indicate that approximately 30% of patients treated with ^{177}Lu -PSMA-617 do not respond favorably (PSA decline < 50% during treatment), and there is limited knowledge regarding predictive factors for treatment success (16).

To prevent administering a complex, costly, and potentially side-effect-laden treatment to patients who are unlikely to benefit, it is crucial to identify the patient groups most likely to respond to ^{177}Lu -PSMA therapy. The aim of this study was to pinpoint clinical, biological and nuclear-imaging parameters in the pretherapeutic phase that are associated with a poor response to treatment.

METHODS

Study design and population

We conducted a single-center, retrospective cohort including all consecutive patients treated at ICO Angers for mCRPC who received at least one cycle of ^{177}Lu -PSMA between February 2022 and December 2023.

Inclusion criteria encompassed the presence of mCRPC, progression following at least one line of taxane chemotherapy and second-generation hormone therapy, and a positive ^{68}Ga -PSMA PET/CT scan according to the VISION study criteria mentioned above.

Exclusion criteria included severe cytopenias and severe renal or hepatic insufficiency, as outlined in the PLUVICTO® product's Summary of Product Characteristics. Additionally, patients involved in clinical research protocols receiving experimental treatments during the ^{177}Lu -PSMA therapy period, and those who did not consent to the use of their health data for research purposes, were also excluded.

The following data were collected from the patient's electronic medical records: characteristics related to the initial disease and previously received treatments, clinical and biological characteristics at the start of ^{177}Lu -PSMA treatment, and characteristics of the ^{68}Ga -PSMA PET/CT scan before the first treatment cycle (C1).

Each treatment decision was made during a multidisciplinary tumor board meeting including oncologists and nuclear medicine physicians. During a pre-

therapeutic consultation, patients were informed about the treatment modalities, expected benefits, and potential adverse effects. Written consent was systematically obtained. A consent form for the use of health data for research purposes was provided and completed by each patient who started treatment during the inclusion period. The study protocol was previously approved by an independent ethics committee.

⁶⁸Ga-PSMA PET/CT and pre-treatment preparation

⁶⁸Ga-PSMA PET/CT scans were performed in accordance with the 2017 European Association of Nuclear Medicine and Society of Nuclear Medicine and Molecular Imaging (EANM and SNMMI) standard recommendations. The first 15 patients underwent their scans at the ICO site in Nantes: 7 on a 2019 Siemens Biograph Vision PET scanner and 8 on a 2020 Siemens Biograph Vision PET scanner. 1 patient had his scan at the Institut Gustave Roussy in Paris on a Siemens Biograph Vision 600 PET scanner, and 47 patients underwent their scans at ICO Angers: 24 on a Philips VEREOS PET scanner and 23 on a GE Discovery IQ PET scanner.

Each scan was interpreted by an experienced nuclear medicine physician on a Syngo.via platform (Siemens Healthineers, Erlangen, Germany), including both visual and quantitative analyses. Lesions were considered PSMA-positive if their uptake intensity was equal to or greater than that of healthy liver tissue.

Measurements of Maximum Standardized Uptake Value – Lean body mass (SUL_{max}) and Total Tumor Volume (TTV) were performed using the automatic segmentation module of the Syngo.via software, which allowed for automatic

segmentation of all PSMA-positive lesions with a segmentation threshold of 41% of each lesion's SUL_{max} .

Patients were categorized into three groups based on the tracer uptake pattern for the definition of the PSG (PET Tumor-to-Salivary Gland) score, based on a visual analysis of the Maximum Intensity Projection image: patients whose more than 80% of lesions had higher uptake than the salivary glands were classified in the 'High' group; patients whose more than 80% of lesions had lower uptake than the salivary glands were classified in the 'Low' group; the remaining patients who did not fit into the first two categories were classified in the 'Intermediate' group. In an international multicenter retrospective study including 237 men, *Hotta et al.* demonstrated that this new visual score is predictive of the response to ^{177}Lu -PSMA treatment with better PSA reduction and longer overall survival for 'High' scores, and with a substantial interreader reproducibility (17).

^{177}Lu -PSMA therapy protocol

The ^{177}Lu -PSMA treatment protocol consisted of administering 6 cycles of 7,4 GBq, each spaced 6 weeks apart, in the context of day hospitalization. At the end of each cycle, whole-body scintigraphy was performed to verify the proper distribution of the radiopharmaceutical to the tumor targets, the absence of extravasation at the injection site or contamination, and the absence of new uptake sites that could suggest disease progression during treatment.

Regular clinical and biological monitoring was established, with laboratory tests performed within 7 days before each cycle and 3 weeks after each treatment

cycle. These tests included PSA level measurement to track changes, complete blood counts, comprehensive liver and kidney function tests, and albumin levels to ensure the treatment's tolerability. Each patient was regularly consulted by both their treating oncologist and the nuclear medicine physician overseeing the treatment. In cases of severe adverse effects, such as cytopenias detected during monitoring, decisions regarding the spacing, postponement or permanent discontinuation of treatment cycles were made on a case-by-case basis by the multidisciplinary medical team.

At the end of the fourth cycle (C4) and the sixth cycle (C6), bone scintigraphy and CT scans of the thorax, abdomen, and pelvis (TAP) were performed to evaluate therapeutic efficacy. An earlier interim evaluation could be requested in case of suspected disease progression during treatment, before C4 or C6.

Outcomes

The primary endpoint was poor response to ^{177}Lu -PSMA, defined by early discontinuation of treatment between the first dose and post-C4 therapeutic assessment for any reason (progression of the disease or early treatment interruption for another reason). Secondary endpoints included a lack of treatment response as measured by PSA levels and the description of overall survival in treated patients. The lack of response based on PSA levels was defined as the proportion of patients who did not achieve a reduction of more than 50% from their baseline PSA level, as measured on the last biological assessment performed prior to C1.

Statistical analysis

Clinical and biological characteristics, disease extent at the start of ^{177}Lu -PSMA treatment, and prior treatments received are described for all patients included in this study, based on the nature of the variable studied, with the number of missing data presented where applicable. Quantitative or discrete data are summarized with median, 25th-75th percentiles, minimum, maximum, mean and standard deviation. Categorical and binary data are described by the number and percentage of data points for each modality.

Univariate analyses

To study the factors associated with early treatment discontinuation (primary endpoint), we distinguish between two groups of patients: those who were unable to receive more than 4 cycles and those who received 5 or 6 cycles of ^{177}Lu -PSMA. We compare characteristics related to initial disease and prior treatments, clinical characteristics at the start of ^{177}Lu -PSMA treatment and PET characteristics using ^{68}Ga -PSMA before the initiation of ^{177}Lu -PSMA treatment between these two groups using logistic regression models.

To investigate factors associated with progression or disease-related death, we used a semi-parametric Cox proportional hazards model to estimate the hazard ratios and associated p-values. In this model, time corresponds to the treatment regimen (C1 to C6). The event of interest is disease progression or death related to cancer. Patients who complete all 6 cycles without progression are censored at C6. Patients who discontinue treatment before C6 without progression and without disease-related death are censored at the date of their last received

cycle. Risk estimation and its 95% confidence interval are performed using the Kaplan-Meier method.

Multivariate analyses

All baseline variables are analyzed univariately first, and variables associated with survival with a p-value < 0.2 are eligible for inclusion in the multivariate model. In cases of high correlation between two variables, the one most significantly associated with survival is preferred. Essential clinical characteristics for interpreting the multivariate analysis are also included in the model, regardless of their univariate significance.

For factors related to receiving 4 or fewer cycles, logistic regression models are employed. For factors associated with progression or disease-related death, Cox proportional hazards models are used.

Repeated PSA measurements

Characteristics of patients who experience a reduction in PSA levels of more than 50% after the start of treatment (compared to before treatment) are compared using logistic regression models. Individual PSA trajectories are graphically represented.

Analyses are conducted under the responsibility of the Clinical Research Department of ICO, Promotion Unit, using appropriate statistical software (R or SAS). No imputation of missing data is planned in the protocol. A p-value < 0.05 is considered statistically significant. In this exploratory study, no correction for alpha inflation is planned.

RESULTS

In this retrospective study, 63 patients were enrolled between February 2022 and December 2023. The average age at initial diagnosis was 62.2 ± 8.2 years and the average age at C1 was 71.8 ± 8.0 years.

At the time of diagnosis, 37 patients (58.7%) had metastatic disease, 16 patients (25.4%) had locally advanced disease and 10 patients (15.9%) had localized disease. A total of 34 patients (54%) had an ISUP score of 4 or higher while 29 patients (46%) had an ISUP score below 4.

Before starting treatment, 56 patients (88.9%) had bone metastases, 35 patients (55.6%) had lymph node involvement, and 3 patients (7.9%) had visceral metastases (affecting the liver, lungs or brain). Of the group, 35 patients (55.6%) had received one line of NHA, 26 patients (41.3%) had received two lines, and 2 patients (3.2%) had received three lines. Additionally, 26 patients (41.3%) had undergone one line of taxane chemotherapy (Docetaxel only) while 37 patients (58.7%) had received two lines (Docetaxel followed by Cabazitaxel). The median initial PSA level was 67.7 ng/mL (95% CI: [19.8; 257.7]) and the median PSA doubling time before C1 was 2.2 months (95% CI: [1.4; 3.8]). On ^{68}Ga -PSMA PET/CT scans, the median SUL_{max} was 23.7 (95% CI: [18.5; 53.1]) and the median TTV was 82.2 mL (95% CI: [18.0; 251.8]). Among these patients, 18 (28.6%) had a high PSG score, 26 (41.3%) had an intermediate PSG score and 19 (30.2%) had a low PSG score.

The average time from initial diagnosis to the start of the first treatment cycle was 8.3 ± 5.8 years. The average time between the ^{68}Ga -PSMA PET/CT scan

and the first treatment cycle was 1 ± 0.6 months. Resumed characteristics of the study population are presented in [Table II](#) and [Appendix](#).

By the end of the study period, patients had received a median of 4 cycles of ^{177}Lu -PSMA therapy. Of these, 32 patients (50.7%) received between 1 and 4 cycles and 31 patients (49.2%) received 5 or 6 cycles. Among those who received one to four cycles, 26 discontinued treatment due to disease progression while 6 stopped for other reasons: 3 due to hematotoxicity, 1 due to death related to heart failure, 1 due to severe hyponatremia and 1 patient who opted to discontinue despite a favorable therapeutic response.

Among patients who received five or six cycles, 4 (6.3%) experienced disease progression and 4 were awaiting their C6. Overall, 38 patients (60.3%) saw a reduction in PSA levels of 50% or more during treatment.

Table II: Resumed characteristics of the study population

Variable	Modality	4 cycles or less (n = 32 patients)	5 or 6 cycles (n = 31 patients)
Age at initial diagnosis	Min / Max	54.0 / 77.0	48.0 / 77.0
	Mean (std)	64.9 (5.8)	62.2 (8.2)
Age at first cycle of ¹⁷⁷ Lu-PSMA	Min / Max	60.0 / 91.0	52.0 / 87.0
	Mean (std)	72.6 (7.5)	71.0 (8.6)
ISUP score	< 4	17 (53.1%)	12 (38.7%)
	≥ 4	15 (46.9%)	19 (61.3%)
Extent at diagnosis	Localized or locally advanced	14 (43.8%)	12 (38.7%)
	Metastatic	18 (56.2%)	19 (61.3%)
Number of previous NHA	1	16 (50.0%)	19 (61.3%)
	2	16 (50.0%)	10 (32.3%)
	3	0 (0%)	2 (6.5%)
Number of previous taxane	1	11 (34.4%)	15 (48.4%)
	2	21 (65.6%)	16 (51.6%)
Baseline PSA level	Min / Max	0.2 / 1032.4	0.01 / 1066.0
	Mean (std)	198.3 (240.3)	149.9 (242.9)
PSA doubling time (month)	≥ 2	14 (43.8%)	22 (73.3%)
	< 2	18 (56.2%)	8 (26.7%)
	NA	0	1
Time between initial diagnosis and first cycle of ¹⁷⁷ Lu-PSMA	Min / Max	1.0 / 19.0	2.0 / 23.0
	Mean (std)	7.7 (5.6)	8.8 (6.0)
ECOG Performance Status	0	6 (18.8%)	11 (35.5%)
	≥ 1	26 (81.2%)	20 (64.5%)
Hb (g/dL)	≥ 10	21 (65.6%)	28 (90.3%)
	< 10	11 (34.4%)	3 (9.7%)
PLT(G/L)	> 150	29 (93.5%)	27 (87.1%)
	≤ 150	2 (6.5%)	4 (12.9%)
	NA	1	0
Albumin (g/L)	≥ 35	17 (56.7%)	26 (86.7%)
	< 35	13 (43.3%)	4 (13.3%)
	NA	2	1
Bone involvement	No	2 (6.2%)	5 (16.1%)
	Yes	30 (93.8%)	26 (83.9%)
Lymph node involvement	No	15 (46.9%)	13 (41.9%)
	Yes	17 (53.1%)	18 (58.1%)
Visceral metastases (liver, lung, brain)	No	25 (78.1%)	28 (90.3%)
	Yes	7 (21.9%)	3 (9.7%)

Min = Minimum ; Max = Maximum ; std = Standard Deviation ; NA = Not Applicable ; ¹⁷⁷Lu = lutetium-117 ; NHA = Novel Hormonal Agent ; PSMA = prostate-specific membrane antigen ; ISUP = International Society of Urological Pathology ; ECOG = Eastern Cooperative Oncology Group ; PSA : prostate-specific antigen ; Hb = hemoglobin ; PLT = Platelets ; SUL_{max} = Maximum Standardized Uptake value – Lean body mass.

Factors associated with early treatment discontinuation

In univariate analysis, the factors associated with early treatment discontinuation (four cycles or fewer) were as follows: a BMI < 25 vs \geq 25 kg/m² (OR: 3.85; 95% CI [1.30–11.11]; p = 0.0148), a PSA doubling time < 2 months vs \geq 2 months (OR: 3.57; 95% CI [1.22–10.00]; p = 0.0206), hemoglobin < 10 g/dL vs \geq 10 g/dL (OR: 4.89; 95% CI [1.21–19.75]; p = 0.0259), albumin < 35 g/L vs \geq 35 g/L (OR: 4.97; 95% CI [1.39–17.82]; p = 0.0138), LDH > 250 IU/L vs \leq 250 IU/L (OR: 5.96; 95% CI [1.99–17.86]; p = 0.0014), and ALP > 125 IU/L vs \leq 125 IU/L (OR: 4.07; 95% CI [1.42–11.7]; p = 0.0091). On ⁶⁸Ga-PSMA PET/CT, a lower SUL_{max} (per unit decrease: OR: 1.02; 95% CI [1.00–1.04]; p = 0.0361), a higher TTV compared to the median (OR: 4.62; 95% CI [1.60–13.35]; p = 0.0047) and a low vs high PSG score (OR: 5.63; 95% CI [1.37–23.17]; p = 0.0166) were also associated with early treatment discontinuation. In multivariate analysis, BMI, PSA doubling time, PSG score, and TTV remained significantly associated with early treatment discontinuation.

The results of the statistical analyses are presented below in [Table III](#) and [Table IV](#).

Additionally, aside from the PSG score, all these factors are significantly associated with disease progression and prostate cancer-specific mortality. This includes the presence of widespread bone involvement (HR: 2.34; 95% CI [1.14–4.78]; p = 0.0198) and pulmonary metastases (HR: 2.63; 95% CI [1.00–6.89]; p = 0.0493). In the multivariate analysis, BMI, PSA doubling time, albumin levels and TTV remain significant predictors. However, metastatic status

at initial diagnosis (HR: 3.33; 95% CI [1.09–10.00]; $p = 0.0357$) and ECOG Performance Status ≥ 1 versus 0 (HR: 3.47; 95% CI [1.25–9.68]; $p = 0.0173$) also emerge as significant.

Detailed results are presented in the Table V and Table VI in Appendix.

Table III: Risk of early treatment discontinuation - Univariate analysis

Variable	Modality	OR	OR _{inf}	OR _{sup}	p.value
Age at initial diagnosis	1 more unit	1.06	0.98	1.14	0.1387
Age at first cycle of ¹⁷⁷ Lu-PSMA	1 more unit	1.03	0.96	1.09	0.4281
ISUP score	≥ 4 vs < 4	0.56	0.20	1.52	0.2528
Extent at diagnosis	Localized or locally advanced vs metastatic	0.81	0.30	2.22	0.6847
	Locally advanced vs localized	1.29	0.26	6.27	0.7560
	Metastatic vs localized	0.95	0.23	3.83	0.9395
Initial treatment by radical prostatectomy	Yes vs No	0.81	0.25	2.57	0.7144
Initial treatment by radiotherapy	Yes vs No	0.73	0.27	1.98	0.5358
Enzalutamide	Yes vs No	0.71	0.26	1.95	0.5032
Abiraterone	Yes vs No	3.33	0.92	12.11	0.0674
Number of previous NHA	1 more unit	1.17	0.48	2.83	0.7316
Docetaxel	Yes vs No	0.00	0.00	Inf	0.9915
Cabazitaxel	Yes vs No	2.06	0.74	5.76	0.1672
Number of previous taxane based chemotherapy	1 more unit	1.79	0.65	4.93	0.2606
Baseline PSA	1 more unit	1.00	1.00	1.00	0.4278
PSA doubling time (month)	< 2 vs ≥ 2	3.54	1.21	10.30	0.0206
Time between initial diagnosis and first cycle of ¹⁷⁷ Lu-PSMA (years)	1 more unit	0.97	0.89	1.06	0.4537
	> 6 vs ≤ 6	0.83	0.31	2.22	0.7070
Regular need of level 2 or 3 analgesics	Yes vs No	2.06	0.74	5.76	0.1672
ECOG Performance Status	≥ 1 vs 0	2.38	0.75	7.55	0.1398
BMI (kg/m ²)	≥ 25 vs < 25	0.26	0.09	0.77	0.0148
Hb (g/dL)	< 10 vs ≥ 10	4.89	1.21	19.75	0.0259
PLT (G/L)	≤ 150 vs > 150	0.47	0.08	2.75	0.3989
WBC (G/L)	< 4 vs ≥ 4	0.54	0.12	2.47	0.4259
Albumin (g/L)	< 35 vs ≥ 35	4.97	1.39	17.82	0.0138
Corrected calcemia (mmol/L)	1 more unit	0.54	0.02	15.89	0.7180
LDH (U/L)	> 250 vs ≤ 250	5.96	1.99	17.86	0.0014
ASAT (UI/L)	> 30 vs ≤ 30	0.96	0.31	2.98	0.9414
ALAT (UI/L)	> 35 vs ≤ 35	0.22	0.02	2.07	0.1844
gGT (UI/L)	> 45 vs ≤ 45	1.47	0.51	4.21	0.4769
ALP (UI/L)	> 125 vs ≤ 125	4.07	1.42	11.70	0.0091
SUL _{max}	1 more unit	0.98	0.96	1.00	0.0361
	Higher vs Lower	0.38	0.14	1.05	0.0615
PSG score	Intermediate vs High	3.03	0.84	10.99	0.0912
	Low vs High	5.63	1.37	23.17	0.0166
Total Tumor Volume	1 more unit	1.00	1.00	1.01	0.0475
	Higher vs Lower	4.62	1.60	13.35	0.0047
Bone involvement	Yes vs No	2.88	0.52	16.14	0.2279
	Single/oligometastatic vs diffuse/widespread	0.56	0.17	1.91	0.3562
	No vs diffuse/widespread	0.30	0.05	1.73	0.1775
Epiduritis	Yes vs No	2.10	0.75	5.84	0.1553
Lymph node involvement	Yes vs No	0.82	0.30	2.21	0.6934
Visceral metastases (liver, lung, brain)	Yes vs No	2.61	0.61	11.21	0.1960
Time between ⁶⁸ Ga-PSMA PET/CT and first cycle of ¹⁷⁷ Lu-PSMA	1 more unit	1.23	0.50	3.06	0.6501

Table IV: Risk of early treatment discontinuation - Multivariate analysis

Variable	Modality	OR	OR _{inf}	OR _{sup}	Pr(> t)
Abiraterone	Yes vs No	1.25	0.99	1.59	0.0703
PSA doubling time (month)	< 2 vs ≥ 2	1.40	1.16	1.70	0.0013
BMI (kg/m ²)	≥ 25 vs < 25	0.74	0.61	0.90	0.0042
Albumin (g/L)	< 35 vs ≥ 35	1.25	0.97	1.61	0.0980
LDH (U/L)	> 250 vs ≤ 250	1.24	1.00	1.53	0.0559
ALAT (UI/L)	> 35 vs ≤ 35	0.78	0.54	1.14	0.2065
PSG score	Intermediate vs High	1.09	0.85	1.39	0.5007
	Low vs High	1.43	1.07	1.90	0.0182
Total Tumor Volume	Higher vs lower	1.31	1.02	1.67	0.0373
Visceral metastases (liver, lung, brain)	Yes vs No	0.86	0.63	1.18	0.3617
Extent at diagnosis	M1 vs M0	0.85	0.64	1.13	0.2726
Time between initial diagnosis and first cycle of ¹⁷⁷ Lu-PSMA (years)	> 6 vs ≤ 6	0.84	0.63	1.12	0.2410

Factors associated with poor PSA response

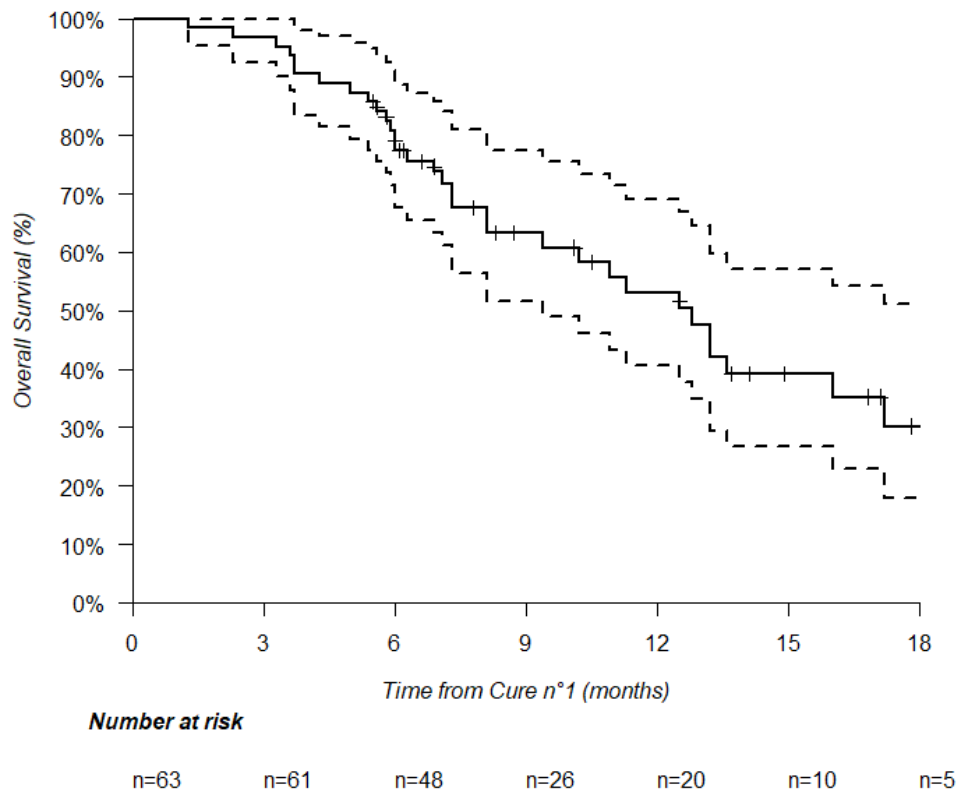
In univariate analysis, the clinico-biological factors associated with a reduction in PSA of less than 50% during treatment were as follows: BMI < 25 vs ≥ 25 kg/m² (OR: 3.85; 95% CI [1.30–11.11]; p = 0.0148), PSA doubling time < 2 vs ≥ 2 months (OR: 3.54; 95% CI [1.21–10.30]; p = 0.0206), hemoglobin < 10 g/dL vs ≥ 10 g/dL (OR: 4.89; 95% CI [1.21–19.75]; p = 0.0259), albumin < 35 g/L vs ≥ 35 g/L (OR: 4.97; 95% CI [1.39–17.82]; p = 0.0138), LDH > 250 IU/L vs ≤ 250 IU/L (OR: 5.96; 95% CI [1.99–17.86]; p = 0.0014), and ALP > 125 IU/L vs ≤ 125 IU/L (OR: 4.07; 95% CI [1.42–11.7]; p = 0.0091). On ⁶⁸Ga-PSMA PET/CT, a higher SUL_{max} (per unit increase: OR = 0.98; 95% CI [0.96–1.00]; p = 0.0361), a higher TTV compared to the median (OR: 4.62; 95% CI [1.60–13.35]; p = 0.0047) and a low vs high PSG score (OR: 5.63; 95% CI [1.37–23.17]; p = 0.0166) were associated with a reduction in PSA of less than 50%.

In multivariate analysis, BMI, PSA doubling time, LDH levels, and PSG score remained significantly associated with PSA response. However, ECOG Performance Status ≥ 1 vs 0 (HR: 1.34; 95% CI [1.05–1.71]; $p = 0.0246$) also became significant.

The PSA level trends and detailed statistical analysis results are presented in [Figure 3](#), [Table VII](#) and [Table VIII](#) in the appendix.

Overall survival from the first cycle of ^{177}Lu -PSMA:

The median follow-up period was 13.7 months (95% CI: 10.5-20.9). A total of 34 deaths were observed in the cohort with a median overall survival of 12.8 months (95% CI: 9.4-18.1). The overall survival of the cohort is depicted in [Figure 2](#).



Time (months)	n.risk	n.event	survival	lower 95% CI	upper 95% CI
3	61	2	0.968	0.926	1
6	48	12	0.774	0.676	0.886
9	26	7	0.632	0.517	0.774
12	20	4	0.53	0.406	0.692
15	10	5	0.391	0.268	0.571
18	5	2	0.302	0.179	0.511

Figure 2: Overall survival of the study population

DISCUSSION

In this study, we assessed the impact of various clinico-biological factors and ^{68}Ga -PSMA PET/CT findings on the response to ^{177}Lu -PSMA treatment in patients with metastatic castration-resistant prostate cancer who had progressed after at least one line of taxane chemotherapy and NHA. We categorized the study population into two groups: patients who received 4 cycles or fewer of treatment versus those who received 5 to 6 cycles. We defined the group receiving 4 or fewer cycles as having a poor therapeutic response. This group also included 6 patients who discontinued treatment for reasons other than disease progression, allowing us to account for potential adverse effects of ^{177}Lu -PSMA, comorbidities, and practical management issues.

Impact of clinico-biological factors on response to ^{177}Lu -PSMA

Our analysis identified several clinico-biological factors associated with an early treatment discontinuation, early progression and low PSA response rate: BMI < 25 kg/m², short PSA doubling time, decreased hemoglobin and albumin level and increased LDH and ALP levels. While ECOG Performance Status ≥ 1 does not appear to be a predictor of early treatment discontinuation, it is associated with early progression and a poorer PSA response in multivariate analysis.

A low BMI, low serum albumin, and a high ECOG Performance Status generally reflect a state of malnutrition and are associated with a deterioration of the patient's overall condition. Cancer-associated malnutrition is known to impair response to chemotherapy (18–20). Based on our findings, we suggest that malnutrition may be linked to a poorer response to ^{177}Lu -PSMA. Further

prospective studies are needed to confirm the impact of malnutrition on treatment outcomes with ^{177}Lu -PSMA. Nonetheless, close monitoring of patient's nutritional status before and during treatment is crucial. In cases of confirmed malnutrition, initiating a re-nutrition strategy could potentially improve therapeutic efficacy and survival.

Interestingly, higher BMI has been linked to better overall survival in cancer patients (21). This finding is paradoxical given that obesity is generally associated with increased all-cause mortality in the general population (22). This discrepancy might be due to one or more confounding factors, as BMI alone is not a reliable indicator of body composition or nutritional status. Body composition can vary widely by age and ethnicity, and individuals with the same BMI can have different distributions of lean and fat mass, which affects prognosis differently (23). For instance, a malnourished individual with sarcopenia but a normal BMI may have a worse prognosis compared to someone with a high BMI but without sarcopenia (24–26). Additionally, our study did not consider recent weight loss before treatment, which could be another confounding factor (27,28).

While metastatic versus non-metastatic status at initial diagnosis is not a predictor of early treatment discontinuation, it is associated with early progression in multivariate analysis. In a retrospective study, *Francini et al.* demonstrated improved overall survival in patients with metachronous versus synchronous hormone-sensitive metastatic prostate cancer (29). Similarly, *Bajeot et al.* reported that synchronous metastatic patients were more symptomatic and had a higher metastatic burden compared to their

metachronous counterparts (30). This leads us to hypothesize that the synchronous metastatic patients in our cohort likely had a more aggressive disease, which may have adversely affected their therapeutic response.

PSA doubling time is a dynamic measure of PSA progression and is widely recognized as one of the most reliable biological markers of prostate cancer aggressiveness. In a prospective study of 1,804 men with localized prostate cancer, D'Amico et al. showed that a PSA velocity exceeding 2 ng/mL per year in the year before diagnosis was associated with a tenfold higher risk of prostate cancer-specific mortality compared to those with a PSA velocity of 2 ng/mL per year or less, following radical prostatectomy (31). Likewise, in a retrospective study of 8,669 patients treated with surgery or radiotherapy, D'Amico et al. demonstrated that a PSA doubling time of less than 3 months was linked to significantly shorter prostate cancer-specific survival after biochemical recurrence, with a Hazard Ratio of 19.6 (32). Consistent with our findings, other studies have shown a significant link between PSA doubling time and progression-free survival after ^{177}Lu -PSMA, with a short or negative doubling time predicting poor therapeutic response (33,34). Based on our results and the existing literature, PSA doubling time also appears to reflect disease aggressiveness in the metastatic castration-resistant stage, with an impact on the response to ^{177}Lu -PSMA. However, the initial PSA level before ^{177}Lu -PSMA treatment does not appear to predict treatment response (35,36).

In metastatic prostate cancer, elevated LDH levels are linked to shorter overall survival and poorer progression-free survival (PFS) (37). Similarly, in cases of bone metastatic prostate cancer, elevated ALP levels indicate increased

osteoblastic activity and greater disease burden (38,39), with a negative impact on overall survival (40). Other studies have confirmed that an elevation of these two markers is associated with a reduction in PFS after ^{177}Lu -PSMA (16,35,36,41–45). In our cohort, elevation of these two biological markers also predict a poor therapeutic response to ^{177}Lu -PSMA, as they are associated with earlier discontinuation of treatment. Thus, the elevation of these markers may also reflect aggressive metastatic disease.

A decrease in hemoglobin levels is frequently observed in cancer patients and is often due to multiple factors. These can include disease-related issues such as marrow infiltration, nutritional deficiencies, the inflammatory syndrome induced by the disease, or chemotherapy-induced toxicity affecting hematopoietic precursors. Low hemoglobin levels are known to be associated with reduced overall survival and lower treatment efficacy (46,47). In our study, a hemoglobin level below 10 g/dL was strongly linked to early treatment discontinuation, early disease progression and a poorer PSA response with significant findings across all multivariate analyses. Therefore, investigating and addressing treatable causes of anemia may be beneficial for improving the response to ^{177}Lu -PSMA.

Contrary to several previous reports, we did not find a significant association between regular use of analgesics of levels 2 or 3 and early treatment discontinuation, early progression or PSA response (36,48).

Lastly, we could not demonstrate a significant association between previous treatments received at the metastatic castration-resistant stage and response to ^{177}Lu -PSMA. The literature on this topic is conflicting (49). However, the TheraP clinical trial, which included 200 patients, found that ^{177}Lu -PSMA was

more effective than Cabazitaxel in reducing PSA levels in progressive mCRPC patients eligible for Cabazitaxel. This suggests that earlier use of ^{177}Lu -PSMA following taxane chemotherapy failure may improve therapeutic response (50). We were also unable to identify a significant link between initial disease characteristics at diagnosis (e.g., initial stage, histopathological grade), disease duration, type of local treatment (if any), and response to ^{177}Lu -PSMA.

Impact of metabolic factors on ^{68}Ga -PSMA PET/CT

In our analysis of ^{68}Ga -PSMA PET/CT, we identified that a low SUL_{max} , a low PSG score, and a high TTV are associated with a poorer therapeutic response.

SUL_{max} measures the maximum activity within the most intense tumor voxel on ^{68}Ga -PSMA PET/CT, adjusted for injected activity and the patient's lean body mass. This unitless value reflects the tumor's avidity for the tracer and thus the expression of membranous PSMA. Consequently, a lesion with high uptake of ^{68}Ga -PSMA results in intense binding and a high SUL_{max} . Other related measures include SUV_{max} , which quantifies the activity of the most intense voxel relative to total body weight, and SUV_{mean} , which measures the average activity within a segmented tumor volume, also relative to total body weight.

Our findings are consistent with those reported by *Kuo et al.* in their analysis of patients from the VISION study, which showed that high SUV_{mean} is associated with better PFS and overall survival (51). Similarly, *Eisazadeh et al.* found that a high $\text{SUL}_{\text{max}} / \text{Liver } \text{SUL}_{\text{mean}}$ ratio was associated with longer PFS in patients treated with ^{177}Lu -PSMA I&T (52). Additionally, a prospective study by *Emmett*

et al. which included 14 patients, demonstrated that high SUV_{max} or SUV_{mean} values correlate with a better PSA response (53).

Our results also confirm the predictive value of the PSG score, as described by *Hotta et al.*, which considers the overall intensity of PSMA expression across all tumor lesions. Intense uptake in most lesions predicts a better response to ^{177}Lu -PSMA. Conversely, low uptake in most lesions predicts a poor response, with earlier treatment discontinuation and a less favorable PSA response (17). These results suggest that the intensity and homogeneity of lesions are key factors influencing the therapeutic response to ^{177}Lu -PSMA.

Furthermore, a high TTV is a predictive factor for poor response, associated with early treatment discontinuation, early progression and a worse PSA response. This finding corroborates *Kuo et al.*'s results in their analysis of VISION data (54) and *Wang et al.*'s findings, which showed an association between high tumor volume and poorer PSA response (55). In line with this, we also observed that diffuse osteomedullary infiltration on ^{68}Ga -PSMA PET/CT is associated with early progression.

In our study population, a low proportion of patients had undergone ^{18}F -FDG PET/CT in addition to ^{68}Ga -PSMA PET/CT before starting PLUVICTO® to detect dedifferentiated tumor lesions. Consequently, we were unable to assess the impact of the presence of FDG-avid and PSMA-low lesions (FDG+/PSMA-) on therapeutic response. *Rosar et al.* demonstrated in their retrospective study that the $\text{FDG } SUV_{max} / \text{PSMA } SUV_{max}$ ratio calculated across multiple target lesions per patient was predictive of therapeutic response after 2 cycles of ^{177}Lu -PSMA.

Specifically, an increase in this ratio (e.g., the presence of FDG+/PSMA– lesions) was associated with a poorer therapeutic response (56).

Several studies have demonstrated the adverse impact of visceral metastases, particularly hepatic involvement, on PFS and overall survival. A meta-analysis involving 1504 patients indicated that the presence of visceral metastases is linked to both poorer biochemical response and shorter PFS and overall survival (57). We were unable to show this negative association in our cohort, likely due to limited statistical power: only 10 out of 63 patients had visceral involvement, and of these, only 3 received more than four cycles. However, we did find that pulmonary or pleural metastatic involvement was associated with early progression.

The observed overall survival in our study (median: 12.8 months) is lower than that reported in the VISION study (median: 15.3 months). This difference may be due to our more permissive inclusion criteria, which allowed us to include patients who were more severely impaired and had more extensive metastatic involvement. For instance, patients with a Superbonescan were excluded from the VISION study but were included in our cohort. Our study aimed to evaluate factors associated with the response to ¹⁷⁷Lu-PSMA in real-world conditions, which naturally differ from those in a clinical trial setting. Moreover, a higher proportion of patients in our cohort received Cabazitaxel (60.3% compared to 41.8% in the VISION study). Indeed, according to the prospective TheraP trial, prior treatment with Cabazitaxel is associated with poorer PFS when followed by ¹⁷⁷Lu-PSMA. Additionally, our study had a shorter median follow-up (13.7 months vs. 20.9 months), which could lead to an underestimation of overall

survival. However, it is noteworthy that the proportion of patients achieving a PSA reduction of $\geq 50\%$ during treatment was higher in our study compared to the VISION study (60.3% vs. 46.0%).

Additionally, it is interesting to note that the incidence of progression by C4 or earlier was higher among the initial patients treated in our cohort. This may be due to the overrepresentation of high tumor volumes and low PSG scores among these early patients. These patients also exhibited the most severe clinical and biological impairment. We can hypothesize that the latter patients were better selected, leading to more favorable therapeutic outcomes.

Main limitations of the study

The primary limitations of this study include its retrospective design, which may introduce recall bias, the small sample size that limits statistical power, and its monocentric nature, which could introduce selection bias and center-specific effects. Specifically, this cohort consists of patients treated at a center specialized in cancer care (Centre de Lutte Contre le Cancer - CLCC) with management practices that might differ from those at other hospital settings, including conventional hospitals.

Additionally, we were unable to investigate the impact of molecular biomarkers on treatment response due to their limited use in routine practice. For example, androgen receptor gene amplification, determined through blood sampling, is associated with reduced PFS in several studies (58–60).

Future perspectives

Currently, most studies focusing on predictive and prognostic factors associated with response to ^{177}Lu -PSMA have a low level of evidence due to their retrospective design, often monocentric nature, small sample sizes, and highly heterogeneous methodologies. Conducting prospective studies to validate the predictive value of already identified factors would be beneficial. Such studies could facilitate the development of nomograms that could be used in clinical practice to more objectively select patients who are most likely to benefit from treatment. For instance, *Gafita et al.* developed nomograms to predict response to ^{177}Lu -PSMA. However, this study is limited by its retrospective nature and the small size of the validation cohort (35).

Due to the high cost of treatment, its radiative nature, the complexity of its implementation, and potential adverse effects, patient selection is crucial.

This issue becomes even more significant considering that ^{177}Lu -PSMA could potentially be used at earlier stages of prostate cancer in the future, significantly increasing the number of patients who would require treatment. This raises the important question of how to select between ^{177}Lu -PSMA and other therapies based on the characteristics of the patients and their disease. Several clinical trials are currently investigating the efficacy of ^{177}Lu -PSMA in earlier stages of prostate cancer. For instance, the PSMAfore trial which included 468 patients demonstrated that ^{177}Lu -PSMA is superior to an androgen receptor pathway inhibitor change in taxane-naïve patients with mCRPC (61). Additionally, the ongoing PSMAAddition trial is assessing the effectiveness of ^{177}Lu -PSMA combined

with standard of care (SoC) versus SoC alone in patients with metastatic hormone-sensitive prostate cancer (62).

Similarly, new radiopharmaceuticals using alpha-emitting isotopes, such as actinium-225 (^{225}Ac –PSMA), have shown promising results in patients who have progressed after ^{177}Lu -PSMA treatment (63).

CONCLUSION:

Our study identifies several predictive factors associated with a poor response to ^{177}Lu -PSMA. Clinico-biologically, these factors include a body mass index (BMI) $< 25 \text{ kg/m}^2$, a PSA doubling time < 2 months, hemoglobin levels $< 10 \text{ g/dL}$, albumin levels $< 35 \text{ g/L}$, and elevated levels of LDH and ALP. These factors are associated with a reduced likelihood of achieving a satisfactory therapeutic response and an increased risk of early treatment discontinuation.

On ^{68}Ga -PSMA PET imaging, poor predictors include a low SUL_{max} , high tumor volume (TTV) and a low PSG score.

The study's findings underscore the importance of integrating clinico-biological parameters and advanced imaging results in the patient selection process for ^{177}Lu -PSMA therapy. These predictive factors can aid in identifying patients who are less likely to benefit from the treatment, thereby optimizing patient management and potentially guiding the use of alternative or additional therapeutic strategies.

BIBLIOGRAPHY

1. Cancer today [Internet]. [cité 29 nov 2023]. Disponible sur: <http://gco.iarc.fr/today/home>
2. Panorama des cancers en France - édition 2023 - Ref: PANOKFR2023B [Internet]. [cité 29 nov 2023]. Disponible sur: <https://www.e-cancer.fr/Expertises-et-publications/Catalogue-des-publications/Panorama-des-cancers-en-France-edition-2023>
3. Siegel DA, O'Neil ME, Richards TB, Dowling NF, Weir HK. Prostate Cancer Incidence and Survival, by Stage and Race/Ethnicity — United States, 2001–2017. *Morb Mortal Wkly Rep*. 16 oct 2020;69(41):1473-80.
4. Artibani W, Porcaro AB, De Marco V, Cerruto MA, Siracusano S. Management of Biochemical Recurrence after Primary Curative Treatment for Prostate Cancer: A Review. *Urol Int*. 21 nov 2017;100(3):251-62.
5. Parker C, Castro E, Fizazi K, Heidenreich A, Ost P, Procopio G, et al. Prostate cancer: ESMO Clinical Practice Guidelines for diagnosis, treatment and follow-up. *Ann Oncol Off J Eur Soc Med Oncol*. sept 2020;31(9):1119-34.
6. Horoszewicz JS, Kawinski E, Murphy GP. Monoclonal antibodies to a new antigenic marker in epithelial prostatic cells and serum of prostatic cancer patients. *Anticancer Res*. 1 sept 1987;7(5B):927-35.
7. Hawkey NM, Sartor AO, Morris MJ, Armstrong AJ. Prostate-Specific Membrane Antigen–Targeted Theranostics: Past, Present, and Future Approaches. *Clin Adv Hematol Oncol HO*. avr 2022;20(4):227-38.
8. The utility of radiolabeled PSMA ligands for tumor imaging. [cité 5 mai 2024]; Disponible sur: <https://onlinelibrary.wiley.com/doi/10.1111/cbdd.13946>
9. Langbein T, Weber WA, Eiber M. Future of Theranostics: An Outlook on Precision Oncology in Nuclear Medicine. *J Nucl Med*. 1 sept 2019;60(Supplement 2):13S-19S.
10. Livechart - Table of Nuclides - Nuclear structure and decay data [Internet]. [cité 20 janv 2024]. Disponible sur: <https://www-nds.iaea.org/relnsd/vcharthtml/VChartHTML.html>
11. Sjögren Gleisner K, Chouin N, Gabina PM, Ciccone F, Gnesin S, Stokke C, et al. EANM dosimetry committee recommendations for dosimetry of ¹⁷⁷Lu-labelled somatostatin-receptor- and PSMA-targeting ligands. *Eur J Nucl Med Mol Imaging*. 1 mai 2022;49(6):1778-809.
12. Sartor O, de Bono J, Chi KN, Fizazi K, Herrmann K, Rahbar K, et al. Lutetium-177–PSMA-617 for Metastatic Castration-Resistant Prostate Cancer. *N Engl J Med*. 16 sept 2021;385(12):1091-103.
13. Hotta M, Gafita A, Czernin J, Calais J. Outcome of Patients with PSMA

PET/CT Screen Failure by VISION Criteria and Treated with ¹⁷⁷Lu-PSMA Therapy: A Multicenter Retrospective Analysis. *J Nucl Med.* 1 oct 2022;63(10):1484-8.

14. Haute Autorité de Santé [Internet]. [cité 14 août 2024]. PLUVICTO (lutécium (¹⁷⁷Lu) vipivotide tétraxétan) - Cancer de la prostate. Disponible sur: https://www.has-sante.fr/jcms/p_3443283/fr/pluvicto-lutecium-177lu-vipivotide-tetraxetan-cancer-de-la-prostate

15. Kratochwil C, Fendler WP, Eiber M, Hofman MS, Emmett L, Calais J, et al. Joint EANM/SNMMI procedure guideline for the use of ¹⁷⁷Lu-labeled PSMA-targeted radioligand-therapy (¹⁷⁷Lu-PSMA-RLT). *Eur J Nucl Med Mol Imaging.* 2023;50(9):2830-45.

16. Rasul S, Hartenbach M, Wollenweber T, Kretschmer-Chott E, Grubmüller B, Kramer G, et al. Prediction of response and survival after standardized treatment with 7400 MBq ¹⁷⁷Lu-PSMA-617 every 4 weeks in patients with metastatic castration-resistant prostate cancer. *Eur J Nucl Med Mol Imaging.* 1 mai 2021;48(5):1650-7.

17. Hotta M, Gafita A, Murthy V, Benz MR, Sonni I, Burger IA, et al. PSMA PET Tumor-to-Salivary Gland Ratio to Predict Response to [¹⁷⁷Lu]PSMA Radioligand Therapy: An International Multicenter Retrospective Study. *J Nucl Med.* 1 juill 2023;64(7):1024-9.

18. Gioulbasanis I, Baracos VE, Giannousi Z, Xyrafas A, Martin L, Georgoulas V, et al. Baseline nutritional evaluation in metastatic lung cancer patients: Mini Nutritional Assessment versus weight loss history. *Ann Oncol.* 1 avr 2011;22(4):835-41.

19. Dewys WD, Begg C, Lavin PT, Band PR, Bennett JM, Bertino JR, et al. Prognostic effect of weight loss prior to chemotherapy in cancer patients. *Am J Med.* 1 oct 1980;69(4):491-7.

20. Andreyev HJN, Norman AR, Oates J, Cunningham D. Why do patients with weight loss have a worse outcome when undergoing chemotherapy for gastrointestinal malignancies? *Eur J Cancer.* 1 mars 1998;34(4):503-9.

21. Shachar SS, Williams GR. The obesity paradox in cancer – moving beyond BMI. *Cancer Epidemiol Biomark Prev Publ Am Assoc Cancer Res Cosponsored Am Soc Prev Oncol.* janv 2017;26(1):13-6.

22. Flegal KM, Kit BK, Orpana H, Graubard BI. Association of All-Cause Mortality With Overweight and Obesity Using Standard Body Mass Index Categories: A Systematic Review and Meta-analysis. *JAMA.* 2 janv 2013;309(1):71-82.

23. Shah AD, Kandula NR, Lin F, Allison MA, Carr J, Herrington D, et al. Less favorable body composition and adipokines in South Asians compared with other US ethnic groups: results from the MASALA and MESA studies. *Int J Obes.* avr 2016;40(4):639-45.

24. Sarcopenia: European consensus on definition and diagnosisA. J. Cruz-Gentoft et al. | Age and Ageing | Oxford Academic [Internet]. [cité 8 sept 2024]. Disponible sur: <https://academic.oup.com/ageing/article/39/4/412/8732?login=false>
25. Cruz-Jentoft AJ, Landi F, Schneider SM, Zúñiga C, Arai H, Boirie Y, et al. Prevalence of and interventions for sarcopenia in ageing adults: a systematic review. Report of the International Sarcopenia Initiative (EWGSOP and IWGS). *Age Ageing*. 1 nov 2014;43(6):748-59.
26. Cruz-Jentoft AJ, Landi F, Topinková E, Michel JP. Understanding sarcopenia as a geriatric syndrome. *Curr Opin Clin Nutr Metab Care*. janv 2010;13(1):1.
27. Wallace JI, Schwartz RS. Involuntary Weight Loss in Elderly Outpatients: Recognition, Etiologies, and Treatment. *Clin Geriatr Med*. 1 nov 1997;13(4):717-36.
28. Weight Change in Old Age and its Association with Mortality - Newman - 2001 - Journal of the American Geriatrics Society - Wiley Online Library [Internet]. [cité 8 sept 2024]. Disponible sur: <https://agsjournals.onlinelibrary.wiley.com/doi/full/10.1046/j.1532-5415.2001.49258.x?sid=nlm%3Apubmed>
29. Francini E, Gray KP, Xie W, Shaw GK, Valença L, Bernard B, et al. Time of metastatic disease presentation and volume of disease are prognostic for metastatic hormone sensitive prostate cancer (mHSPC). *The Prostate*. 2018;78(12):889-95.
30. Bajeot AS, Roumiguié M, Rébillard X, Descotes JL, Duguet C, Lebreton T, et al. Prise en charge des cancers de la prostate métastatiques synchrones et métachrones en France : étude observationnelle à partir des « RCP sentinelles » de l'AFU. *Prog En Urol*. 1 sept 2022;32(10):691-701.
31. D'Amico AV, Chen MH, Roehl KA, Catalona WJ. Preoperative PSA Velocity and the Risk of Death from Prostate Cancer after Radical Prostatectomy. *N Engl J Med*. 8 juill 2004;351(2):125-35.
32. D'Amico AV, Moul JW, Carroll PR, Sun L, Lubeck D, Chen MH. Surrogate End Point for Prostate Cancer-Specific Mortality After Radical Prostatectomy or Radiation Therapy. *JNCI J Natl Cancer Inst*. 17 sept 2003;95(18):1376-83.
33. Suman S, Parghane RV, Joshi A, Prabhash K, Bakshi G, Talole S, et al. Therapeutic efficacy, prognostic variables and clinical outcome of 177Lu-PSMA-617 PRLT in progressive mCRPC following multiple lines of treatment: prognostic implications of high FDG uptake on dual tracer PET-CT vis-à-vis Gleason score in such cohort. *Br J Radiol*. déc 2019;92(1104):20190380.
34. Telli T, Tuncel M, Karabulut E, Aksoy S, Erman M, Akdogan B, et al. Prognostic factors of overall and prostate-specific antigen-progression-free survival in metastatic castration-resistant prostate cancer patients treated with 177Lu-PSMA-617. A single-center prospective observational study. *The*

Prostate. 2023;83(8):792-800.

35. Gafita A, Calais J, Grogan TR, Hadaschik B, Wang H, Weber M, et al. Nomograms to predict outcomes after ¹⁷⁷Lu-PSMA therapy in men with metastatic castration-resistant prostate cancer: an international, multicentre, retrospective study. *Lancet Oncol.* 1 août 2021;22(8):1115-25.

36. Ferdinandus J, Eppard E, Gaertner FC, Kürpig S, Fimmers R, Yordanova A, et al. Predictors of Response to Radioligand Therapy of Metastatic Castrate-Resistant Prostate Cancer with ¹⁷⁷Lu-PSMA-617. *J Nucl Med.* 1 févr 2017;58(2):312-9.

37. Li F, Xiang H, Pang Z, Chen Z, Dai J, Chen S, et al. Association between lactate dehydrogenase levels and oncologic outcomes in metastatic prostate cancer: A meta-analysis. *Cancer Med.* 2020;9(19):7341-51.

38. Nishimori H, Ehata S, Suzuki HI, Katsuno Y, Miyazono K. Prostate Cancer Cells and Bone Stromal Cells Mutually Interact with Each Other through Bone Morphogenetic Protein-mediated Signals*. *J Biol Chem.* 8 juin 2012;287(24):20037-46.

39. Mundy GR. Metastasis to bone: causes, consequences and therapeutic opportunities. *Nat Rev Cancer.* août 2002;2(8):584-93.

40. Heinrich D, Bruland Ø, Guise TA, Suzuki H, Sartor O. Alkaline Phosphatase in Metastatic Castration-Resistant Prostate Cancer: Reassessment of an Older Biomarker. *Future Oncol.* 21 juin 2018;14(24):2543-56.

41. Barber TW, Singh A, Kulkarni HR, Niepsch K, Billah B, Baum RP. Clinical Outcomes of ¹⁷⁷Lu-PSMA Radioligand Therapy in Earlier and Later Phases of Metastatic Castration-Resistant Prostate Cancer Grouped by Previous Taxane Chemotherapy. *J Nucl Med.* 1 juill 2019;60(7):955-62.

42. Heck MM, Tauber R, Schwaiger S, Retz M, D'Alessandria C, Maurer T, et al. Treatment Outcome, Toxicity, and Predictive Factors for Radioligand Therapy with ¹⁷⁷Lu-PSMA-I&T in Metastatic Castration-resistant Prostate Cancer. *Eur Urol.* 1 juin 2019;75(6):920-6.

43. Rathke H, Holland-Letz T, Mier W, Flechsig P, Mavriopoulou E, Röhrich M, et al. Response Prediction of ¹⁷⁷Lu-PSMA-617 Radioligand Therapy Using Prostate-Specific Antigen, Chromogranin A, and Lactate Dehydrogenase. *J Nucl Med.* 1 mai 2020;61(5):689-95.

44. Bräuer A, Grubert LS, Roll W, Schrader AJ, Schäfers M, Bögemann M, et al. ¹⁷⁷Lu-PSMA-617 radioligand therapy and outcome in patients with metastasized castration-resistant prostate cancer. *Eur J Nucl Med Mol Imaging.* 1 sept 2017;44(10):1663-70.

45. Rahbar K, Ahmadzadehfar H, Kratochwil C, Haberkorn U, Schäfers M, Essler M, et al. German Multicenter Study Investigating ¹⁷⁷Lu-PSMA-617 Radioligand Therapy in Advanced Prostate Cancer Patients. *J Nucl Med.* 1 janv

2017;58(1):85-90.

46. Zhang L, Zhou G, Li Y, Tang L, Mao Y, Lin A, et al. Combined prognostic value of pretreatment anemia and cervical node necrosis in patients with nasopharyngeal carcinoma receiving intensity-modulated radiotherapy: A large-scale retrospective study. *Cancer Med.* 16 oct 2017;6(12):2822-31.

47. Caro JJ, Salas M, Ward A, Goss G. Anemia as an independent prognostic factor for survival in patients with cancer. *Cancer.* 2001;91(12):2214-21.

48. Ahmadzadehfar H, Eppard E, Kürpig S, Fimmers R, Yordanova A, Schlenkhoff CD, et al. Therapeutic response and side effects of repeated radioligand therapy with ¹⁷⁷Lu-PSMA-DKFZ-617 of castrate-resistant metastatic prostate cancer. *Oncotarget.* 8 févr 2016;7(11):12477-88.

49. Manafi-Farid R, Harsini S, Saidi B, Ahmadzadehfar H, Herrmann K, Briganti A, et al. Factors predicting biochemical response and survival benefits following radioligand therapy with [¹⁷⁷Lu]Lu-PSMA in metastatic castrate-resistant prostate cancer: a review. *Eur J Nucl Med Mol Imaging.* 1 nov 2021;48(12):4028-41.

50. Hofman MS, Emmett L, Sandhu S, Iravani A, Joshua AM, Goh JC, et al. [¹⁷⁷Lu]Lu-PSMA-617 versus cabazitaxel in patients with metastatic castration-resistant prostate cancer (TheraP): a randomised, open-label, phase 2 trial. *The Lancet.* 27 févr 2021;397(10276):797-804.

51. Kuo P, Hesterman J, Rahbar K, Kendi AT, Wei XX, Fang B, et al. [⁶⁸Ga]Ga-PSMA-11 PET baseline imaging as a prognostic tool for clinical outcomes to [¹⁷⁷Lu]Lu-PSMA-617 in patients with mCRPC: A VISION substudy. *J Clin Oncol.* juin 2022;40(16_suppl):5002-5002.

52. Eisazadeh R, Mirshahvalad SA, Schwieghofer-Zwink G, Hehenwarter L, Rendl G, Gampenrieder S, et al. Pre-treatment ⁶⁸Ga-PSMA-11 PET/CT Prognostic Value in Predicting Response to ¹⁷⁷Lu-PSMA-I&T Therapy and Patient Survival. *Mol Imaging Biol.* 1 avr 2024;26(2):360-9.

53. Emmett L, Crumbaker M, Ho B, Willowson K, Eu P, Ratnayake L, et al. Results of a Prospective Phase 2 Pilot Trial of ¹⁷⁷Lu-PSMA-617 Therapy for Metastatic Castration-Resistant Prostate Cancer Including Imaging Predictors of Treatment Response and Patterns of Progression. *Clin Genitourin Cancer.* 1 févr 2019;17(1):15-22.

54. Kuo PH, Morris MJ, Hesterman J, Kendi AT, Rahbar K, Wei XX, et al. Quantitative ⁶⁸Ga-PSMA-11 PET and Clinical Outcomes in Metastatic Castration-resistant Prostate Cancer Following ¹⁷⁷Lu-PSMA-617 (VISION Trial). *Radiology.* août 2024;312(2):e233460.

55. Wang G, Zang J, Jiang Y, Liu Q, Sui H, Wang R, et al. A Single-Arm, Low-Dose, Prospective Study of ¹⁷⁷Lu-EB-PSMA Radioligand Therapy in Patients with Metastatic Castration-Resistant Prostate Cancer. *J Nucl Med.* 1 avr 2023;64(4):611-7.

56. Rosar F, Burgard C, David S, Marlowe RJ, Bartholomä M, Maus S, et al. Dual FDG/PSMA PET imaging to predict lesion-based progression of mCRPC during PSMA-RLT. *Sci Rep.* 17 mai 2024;14:11271.
57. Satapathy S, Mittal BR, Sood A. Visceral Metastases as Predictors of Response and Survival Outcomes in Patients of Castration-Resistant Prostate Cancer Treated With 177Lu-Labeled Prostate-Specific Membrane Antigen Radioligand Therapy: A Systematic Review and Meta-analysis. *Clin Nucl Med.* déc 2020;45(12):935.
58. Vanwelkenhuyzen J, Van Bos E, Van Bruwaene S, Lesage K, Maes A, Üstmert S, et al. AR and PI3K Genomic Profiling of Cell-free DNA Can Identify Poor Responders to Lutetium-177-PSMA Among Patients with Metastatic Castration-resistant Prostate Cancer. *Eur Urol Open Sci.* 1 juill 2023;53:63-6.
59. De Giorgi U, Sansovini M, Severi S, Nicolini S, Monti M, Gurioli G, et al. Circulating androgen receptor gene amplification and resistance to 177Lu-PSMA-617 in metastatic castration-resistant prostate cancer: results of a Phase 2 trial. *Br J Cancer.* oct 2021;125(9):1226-32.
60. Sun M, Thomas C, Orlando F, Sigouros M, Osborne J, Nauseef J, et al. 1390P Circulating tumor DNA (ctDNA) and prognosis with PSMA-targeted radionuclide therapy (TRT). *Ann Oncol.* 1 sept 2022;33:S1179.
61. Sartor O, Gauna DEC, Herrmann K, Bono JS de, Shore ND, Chi KNN, et al. LBA13 Phase III trial of [177Lu]Lu-PSMA-617 in taxane-naïve patients with metastatic castration-resistant prostate cancer (PSMAfore). *Ann Oncol.* 1 oct 2023;34:S1324-5.
62. Tagawa ST, Sartor AO, Saad F, Reid AH, Sakharova OV, Feng FY, et al. PSMAAddition: A phase 3 trial to compare treatment with 177Lu-PSMA-617 plus standard of care (SoC) and SoC alone in patients with metastatic hormone-sensitive prostate cancer. *J Clin Oncol.* juin 2023;41(16_suppl):TPS5116-TPS5116.
63. Sathekge MM, Lawal IO, Bal C, Bruchertseifer F, Ballal S, Cardaci G, et al. Actinium-225-PSMA radioligand therapy of metastatic castration-resistant prostate cancer (WARMTH Act): a multicentre, retrospective study. *Lancet Oncol.* 1 févr 2024;25(2):175-83.

LISTE DES FIGURES

Figure 1: ^{177}Lu -PSMA treatment regimen and monitoring at ICO Angers	9
Figure 2: Overall survival of the study population	24
Figure 3: PSA level trends for each patient	IV

LISTE DES TABLEAUX

Table I: Interpretation criteria for ^{68}Ga -PSMA PET in the VISION study	6
Table II: Resumed characteristics of the study population.....	18
Table III: Risk of early treatment discontinuation - Univariate analysis	21
Table IV: Risk of early treatment discontinuation - Multivariate analysis	22
Table V: Risk of early progression – Univariate analysis	I
Table VI: Risk of early progression – Multivariate analysis	II
Table VII: Risk of poor PSA response – Univariate analysis	II
Table VIII: Risk of poor PSA response – Multivariate analysis	III

TABLE DES MATIERES

SERMENT D'HIPPOCRATE	
INTRODUCTION	3
METHODS	10
Study design and population	10
⁶⁸ Ga-PSMA PET/CT and pre-treatment preparation	11
¹⁷⁷ Lu-PSMA therapy protocol.....	12
Outcomes.....	13
Statistical analysis	14
Univariate analyses	14
Multivariate analyses	15
Repeated PSA measurements.....	15
RESULTS	16
Factors associated with early treatment discontinuation	19
Factors associated with poor PSA response	22
Overall survival from the first cycle of ¹⁷⁷ Lu-PSMA:.....	23
DISCUSSION	25
Impact of clinico-biological factors on response to ¹⁷⁷ Lu-PSMA.....	25
Impact of metabolic factors on ⁶⁸ Ga-PSMA PET/CT	29
Main limitations of the study	32
Future perspectives	33
CONCLUSION:	35
BIBLIOGRAPHY	36
LISTE DES FIGURES	42
LISTE DES TABLEAUX	43
TABLE DES MATIERES	44
APPENDIX	I

APPENDIX

Table V: Risk of early progression – Univariate analysis

Variable	Modality	HR	95 % CI inf	95 % CI sup	p.value
Age at initial diagnosis	1 more y	1.04	0.99	1.09	0.1642
Age at first cycle of ¹⁷⁷ Lu-PSMA	1 more y	1.01	0.97	1.06	0.5142
ISUP score	≥ 4 vs < 4	0.74	0.37	1.50	0.4092
Extent at diagnosis	Localized or locally advanced vs metastatic	1.08	0.52	2.22	0.8381
	Locally advanced vs localized	1.26	0.38	4.18	0.7071
	Metastatic vs localized	1.25	0.42	3.67	0.6856
Initial treatment by radical prostatectomy	Yes vs No	0.68	0.28	1.65	0.3886
Initial treatment by radiotherapy	Yes vs No	0.92	0.45	1.88	0.8258
Enzalutamide	Yes vs No	0.85	0.42	1.75	0.6665
Abiraterone	Yes vs No	3.20	0.97	10.5 5	0.0555
Number of previous NHA	1 more line	1.22	0.68	2.19	0.4978
Docetaxel	Yes vs No	3,36	0.00	Inf	0.9971
Cabazitaxel	Yes vs No	1.85	0.85	4.03	0.1192
Number of previous taxane based chemotherapy	1 more line	1.90	0.87	4.13	0.1051
Baseline PSA level	1 more unit	1.00	1.00	1.00	0.1637
PSA doubling time (month)	< 2 vs ≥ 2	2.08	1.02	4.23	0.0441
Time between initial diagnosis and first cycle of ¹⁷⁷ Lu-PSMA (years)	1 more y	0.97	0.91	1.04	0.3899
	> 6 vs ≤ 6	0.75	0.37	1.53	0.4293
Regular need of level 2 or 3 analgesics	Yes vs No	1.85	0.85	4.03	0.1192
ECOG Performance Status	≥ 1 vs 0	1.76	0.76	4.10	0.1875
BMI (kg/m ²)	≥ 25 vs < 25	0.34	0.17	0.69	0.0029
Hb (g/dL)	< 10 vs ≥ 10	3.27	1.55	6.87	0.0018
PLT (G/L)	≤ 150 vs > 150	0.69	0.16	2.91	0.6155
WBC (G/L)	< 4 vs ≥ 4	0.59	0.18	1.95	0.3872
Albumin (g/L)	< 35 vs ≥ 35	2.65	1.27	5.55	0.0095
Corrected calcemia (mmol/L)	1 more unit	0.76	0.06	9.83	0.8318
LDH (U/L)	> 250 vs ≤ 250	3.38	1.55	7.37	0.0022
ASAT (UI/L)	> 30 vs ≤ 30	1.24	0.57	2.69	0.5923
ALAT (UI/L)	> 35 vs ≤ 35	0.67	0.16	2.79	0.5776
gGT (UI/L)	> 45 vs ≤ 45	1.69	0.83	3.45	0.1500
ALP (UI/L)	> 125 vs ≤ 125	3.10	1.45	6.60	0.0034
SUL _{max}	1 more unit	0.99	0.97	1.00	0.0891
	Higher vs lower	0.66	0.32	1.35	0.2576

Variable	Modality	HR	95 % CI inf	95 % CI sup	p.value
PSG score	Intermediate vs High	2.40	0.87	6.63	0.0901
	Low vs High	2.68	0.93	7.75	0.0689
Total Tumor Volume (mL)	1 more unit	1.00	1.00	1.00	0.0066
	Higher vs lower	3.46	1.59	7.54	0.0018
Bone involvement	Yes vs No	2.20	0.52	9.24	0.2806
	Single/oligometastatic vs diffuse/widespread	0.53	0.20	1.38	0.1943
	No vs diffuse/widespread	0.39	0.09	1.67	0.2051
Epiduritis	Yes vs No	2.00	0.99	4.07	0.0545
Lymph node involvement	Yes vs No	0.83	0.41	1.69	0.6118
Pleural/lung metastases	Yes vs No	2.63	1.00	6.89	0.0493
Visceral metastases (liver, lung, brain)	Yes vs No	2.11	0.91	4.91	0.0829
Time between ⁶⁸ Ga-PSMA PET/CT and first cycle of ¹⁷⁷ Lu-PSMA	1 more month	1.22	0.70	2.13	0.4805

Table VI: Risk of early progression – Multivariate analysis

Variable	Modality	HR	HR _{inf}	HR _{sup}	p.value
Abiraterone	Yes vs No	4.14	0.90	19.12	0.0689
PSA doubling time (month)	< 2 vs ≥ 2	5.07	2.18	11.78	0.0002
Extent at diagnosis	M1 vs M0	0.30	0.10	0.92	0.0357
Time between initial diagnosis and first cycle of ¹⁷⁷ Lu-PSMA (years)	> 6 vs ≤ 6	0.31	0.09	1.03	0.0564
ECOG Performance Status	≥ 1 vs 0	3.47	1.25	9.68	0.0173
BMI (kg/m ²)	≥ 25 vs < 25	0.18	0.07	0.45	0.0003
Albumin (g/L)	< 35 vs ≥ 35	3.13	1.13	8.67	0.0281
Total Tumor Volume (mL)	Higher vs lower	3.94	1.45	10.70	0.0071
Visceral metastases (liver, lung, brain)	Yes vs No	1.66	0.63	4.34	0.3028

Table VII: Risk of poor PSA response – Univariate analysis

Variable	Modality	OR	OR _{inf}	OR _{sup}	p.value
Age at initial diagnosis	1 more unit	1.03	0.96	1.11	0.3599
Age at first cycle of ¹⁷⁷ Lu-PSMA	1 more unit	1.03	0.96	1.09	0.4281
ISUP score	≥ 4 vs < 4	0.56	0.20	1.52	0.2528
Extent at diagnosis	Localized or locally advanced vs metastatic	0.81	0.30	2.22	0.6847
	Locally advanced vs localized	1.29	0.26	6.27	0.7560
	Metastatic vs localized	0.95	0.23	3.83	0.9395
Initial treatment by radical prostatectomy	Yes vs No	0.81	0.25	2.57	0.7144
Initial treatment by radiotherapy	Yes vs No	0.73	0.27	1.98	0.5358
Enzalutamide	Yes vs No	0.71	0.26	1.95	0.5032
Abiraterone	Yes vs No	3.33	0.92	12.11	0.0674
Number of previous NHA	1 more unit	1.17	0.48	2.83	0.7316
Docetaxel	Yes vs No	0.00	0.00	Inf	0.9915
Cabazitaxel	Yes vs No	2.06	0.74	5.76	0.1672

Variable	Modality	OR	OR _{inf}	OR _{sup}	p.value
Number of previous taxane based chemotherapy	1 more unit	1.79	0.65	4.93	0.2606
Baseline PSA level	1 more unit	1.00	1.00	1.00	0.4278
PSA doubling time (month)	< 2 vs ≥ 2	3.54	1.21	10.30	0.0206
Time between initial diagnosis and first cycle of ¹⁷⁷ Lu-PSMA (years)	1 more unit	0.97	0.89	1.06	0.4537
	> 6 vs ≤ 6	0.83	0.31	2.22	0.7070
Regular need of level 2 or 3 analgesics	Yes vs No	2.06	0.74	5.76	0.1672
ECOG Performance Status	≥ 1 vs 0	2.38	0.75	7.55	0.1398
BMI (kg/m ²)	≥ 25 vs < 25	0.26	0.09	0.77	0.0148
Hb (g/dL)	< 10 vs ≥ 10	4.89	1.21	19.75	0.0259
PLT (G/L)	≤ 150 vs > 150	0.47	0.08	2.75	0.3989
WBC (G/L)	< 4 vs ≥ 4	0.54	0.12	2.47	0.4259
Albumin (g/L)	< 35 vs ≥ 35	4.97	1.39	17.82	0.0138
Corrected calcemia (mmol/L)	1 more unit	0.54	0.02	15.89	0.7180
LDH (U/L)	> 250 vs ≤ 250	5.96	1.99	17.86	0.0014
ASAT (UI/L)	> 30 vs ≤ 30	0.96	0.31	2.98	0.9414
ALAT (UI/L)	> 35 vs ≤ 35	0.22	0.02	2.07	0.1844
gGT (UI/L)	> 45 vs ≤ 45	1.47	0.51	4.21	0.4769
ALP (UI/L)	> 125 vs ≤ 125	4.07	1.42	11.70	0.0091
SUL _{max}	1 more unit	0.98	0.96	1.00	0.0361
	Higher vs Lower	0.38	0.14	1.05	0.0615
PSG score	Intermediate vs High	3.03	0.84	10.99	0.0912
	Low vs High	5.63	1.37	23.17	0.0166
Total Tumor Volume (mL)	1 more unit	1.00	1.00	1.01	0.0475
	Higher vs Lower	4.62	1.60	13.35	0.0047
Epiduritis	Yes vs No	2.10	0.75	5.84	0.1553
Bone involvement	Yes vs No	2.88	0.52	16.14	0.2279
	Single/oligometastatic vs diffuse/widespread	0.56	0.17	1.91	0.3562
	No vs diffuse/widespread	0.30	0.05	1.73	0.1775
Lymph node involvement	Yes vs No	0.82	0.30	2.21	0.6934
Visceral metastases (liver, lung, brain)	Yes vs No	2.61	0.61	11.21	0.1960
Time between ⁶⁸ Ga-PSMA PET/CT and first cycle of ¹⁷⁷ Lu-PSMA	1 more unit	1.23	0.50	3.06	0.6501

Table VIII: Risk of poor PSA response – Multivariate analysis

Variable	Modality	OR	OR _{inf}	OR _{sup}	p.value
PSA doubling time (month)	< 2 vs ≥ 2	1.34	1.09	1.67	0.0092
ECOG Performance Status	≥ 1 vs 0	1.34	1.05	1.71	0.0246
BMI (kg/m ²)	≥ 25 vs < 25	0.79	0.63	0.97	0.0328
LDH (U/L)	> 250 vs ≤ 250	1.28	1.02	1.60	0.0407
PSG score	Intermediate vs High	1.11	0.86	1.43	0.4262
	Low vs High	1.42	1.04	1.94	0.0320
Visceral metastases (liver, lung, brain)	Yes vs No	0.75	0.46	1.25	0.2751
Pleural/Lung metastases	Yes vs No	1.60	0.88	2.91	0.1341
Extent at diagnosis	M1 vs M0	0.98	0.72	1.32	0.8694
Time between initial diagnosis and first cycle of ¹⁷⁷ Lu-PSMA (years)	> 6 vs ≤ 6	1.02	0.77	1.36	0.8816

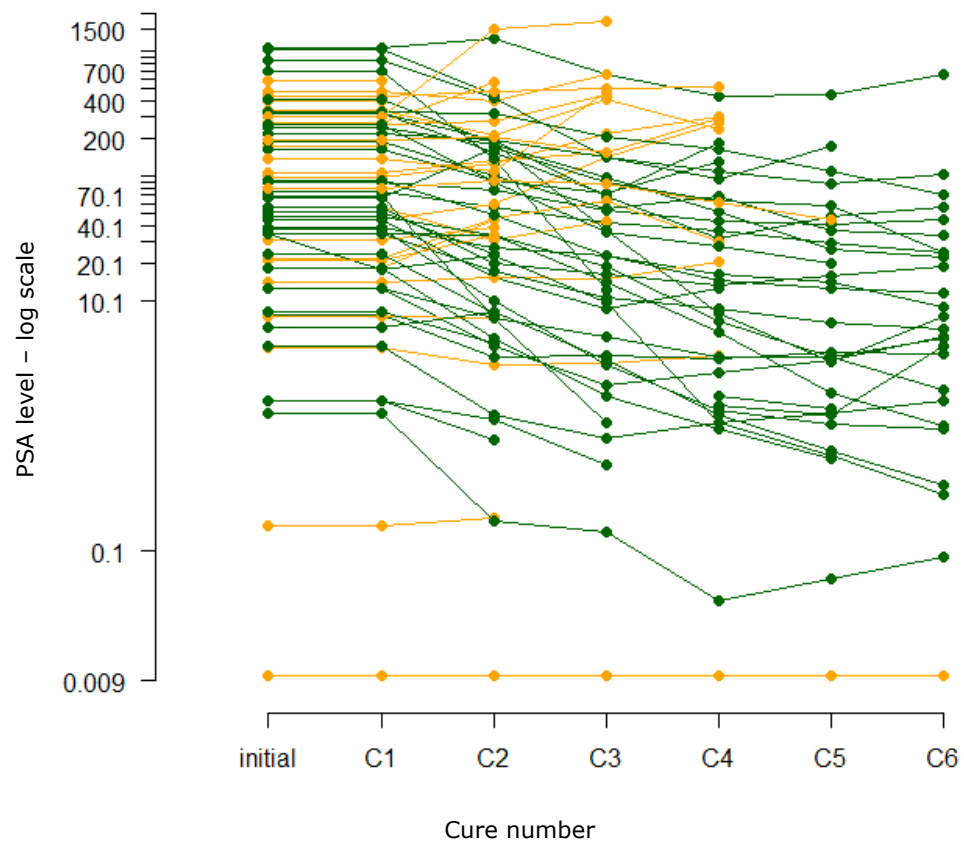


Figure 3: PSA level trends for each patient

Étude des facteurs prédictifs de réponse au ^{177}Lu -PSMA chez les patients atteints de cancer de prostate métastatique résistant à la castration

RÉSUMÉ

Introduction : Le cancer de prostate métastatique résistant à la castration (mCRPC) est une pathologie de pronostic sombre pour laquelle les options thérapeutiques sont limitées. Depuis quelques années, un nouveau médicament radiopharmaceutique, le ^{177}Lu -PSMA, a montré des résultats encourageants chez ces patients après échec des thérapies conventionnelles. Cependant, environ 30% des patients ne répondent pas correctement à ce traitement. Dans cette étude de cohorte rétrospective, nous avons étudié les facteurs clinico-biologiques et extraits de la TEP au ^{68}Ga -PSMA associés à une mauvaise réponse au traitement.

Matériels et méthode : Nous avons réalisé une étude de cohorte rétrospective incluant 63 patients traités à l'ICO Angers pour un mCRPC progressif après hormonothérapie de seconde génération et chimiothérapie par taxane. Le critère de jugement principal était l'interruption précoce du traitement à la 4^e cure ou avant. Les critères de jugement secondaires étaient la réponse selon le taux de PSA et la survie globale.

Résultats : 63 patients ont été inclus dans notre étude. Les facteurs associés à une interruption précoce du traitement sont un IMC < 25 kg/m², un temps de doublement des PSA < 2 mois, un taux d'hémoglobine < 10 g/dL, une albuminémie < 35 g/L et un taux élevé de Lactate Déshydrogénase (LDH) et de Phosphatases Alcalines (PAL). Sur la TEP au ^{68}Ga -PSMA, une SUL_{max} basse, un Volume Tumoral Total élevé et un score PSG bas étaient associés à une interruption précoce du traitement.

Conclusion : Au cours de cette étude, nous avons pu identifier plusieurs facteurs clinico-biologiques et extraits de la TEP au ^{68}Ga -PSMA associés à un arrêt précoce du traitement. Notamment, les patients présentant un état général altéré, une maladie agressive, étendue ou avec une faible expression du PSMA sont les plus à risque d'échec de traitement.

Mots-clés : ^{177}Lu -PSMA, mCRPC, ^{68}Ga -PSMA, TEP-TDM, facteurs prédictifs, réponse thérapeutique, Volume Tumoral Total, Score PSG

Study of predictive factors for response to ^{177}Lu -PSMA in patients with metastatic castration-resistant prostate cancer

ABSTRACT

Introduction: Metastatic castration-resistant prostate cancer (mCRPC) is an aggressive disease with a poor prognosis and few therapeutic options. In recent years, ^{177}Lu -PSMA, a novel radioligand therapy, has shown promising results in patients who have failed conventional therapies. However, around 30% of patients do not respond adequately to this treatment. In this retrospective cohort study, we examined clinical, biological, and ^{68}Ga -PSMA PET/CT-derived factors associated with poor treatment response.

Materials and Methods: We conducted a retrospective cohort study including 63 patients treated at ICO Angers for progressive mCRPC following Novel Hormonal Agents and taxane-based chemotherapy. The primary endpoint was early treatment discontinuation, defined as stopping therapy at or before the 4th cycle. Secondary endpoints included PSA response and overall survival.

Results: A total of 63 patients were included in the study. Factors associated with early treatment discontinuation included a BMI < 25 kg/m², PSA doubling time < 2 months, hemoglobin levels < 10 g/dL, albumin levels < 35 g/L, and elevated levels of lactate dehydrogenase (LDH) and alkaline phosphatase (ALP). On ^{68}Ga -PSMA PET/CT imaging, low SUL_{max} , high Total Tumor Volume, and a low PSG score were also linked to early treatment discontinuation.

Conclusion: This study identified several clinical, biological, and ^{68}Ga -PSMA PET/CT-derived factors associated with early treatment discontinuation. Patients with poor overall health, aggressive or extensive disease, or low PSMA expression are at higher risk of treatment failure.

Keywords: ^{177}Lu -PSMA, mCRPC, ^{68}Ga -PSMA, PET/CT, predictive factors, therapeutic response, SUL_{max} , Total Tumor Volume, PSG Score